



Sony Ericsson

Working Instructions

- mechanical -



Hazel

J20, J20i



CONTENTS

1	Exterior Views.....	4
1.1	J20, J20i	4
2	Tools	5
3	Disassembly.....	6
3.1	Battery Cover & Battery	6
3.2	Lower Rear Cover Frame Assy	7
3.3	Main PCBA	9
3.4	Lower Front Cover Assy	12
3.5	Sub Keypad.....	13
3.6	Deco Sheet.....	15
3.7	Upper Front Cover Assy	15
3.8	Sub Keyboard Assy	17
3.9	Display.....	19
3.10	Hinge Slide & Upper Rear Cover Assy	19
4	Replacement	22
4.1	Battery Cover	22
4.2	Lower Rear Cover Frame	22
4.3	Lower Front Cover	22
4.4	Hinge Slide	22
4.5	Upper Rear Cover	23
4.6	Camera 5 Mpixel	24
4.7	Co Branding.....	26
4.8	Core Unit Label.....	28
4.9	Deco Sheet.....	29
4.10	Display.....	31
4.11	Display Gasket.....	33
4.12	Liquid Intrusion Indicator	34
4.13	Main Camera Key	36
4.14	Main Camera Key FPC	38
4.15	Main Camera Socket Shielding	40
4.16	Main FPC	42
4.17	Main Key Dome with Light Guide	45
4.18	Main Keypad Adhesive	46
4.19	Main Keypad	48
4.20	Receiver	51
4.21	Receiver Gasket	53
4.22	Shield Can Lid BB	54
4.23	Shield Can Lid WIFI&BT	56



4.24	SIM Connector Foil.....	58
4.25	Speaker	59
4.26	Speaker Gasket	61
4.27	Sub Camera	62
4.28	Sub Camera Frame.....	64
4.29	Sub Keyboard	66
4.30	Sub Keyboard Domesheet.....	69
4.31	Sub Keyboard Film.....	71
4.32	Sub Keyboard Frame	73
4.33	Sub Keypad Adhesive.....	75
4.34	Sub Keypad.....	77
4.35	Upper Front Cover.....	79
4.36	Vibrator.....	83
4.37	Volume Key	84
4.38	Board Swap—Replace Swap Board	85
4.39	Board Swap – Change Label	85
4.40	Board Swap – Customize Software	85
5	Reassembly.....	86
5.1	Hinge Slide &Upper Rear Cover Assy	86
5.2	Display.....	88
5.3	Sub Keyboard Assy	88
5.4	Upper Front Cover Assy	90
5.5	Sub Keypad.....	92
5.6	Deco Sheet.....	93
5.7	Lower Front Cover Assy	94
5.8	Main PCBA	95
5.9	Lower Rear Cover Frame Assy	97
5.10	Battery & Battery Cover	98
6	Revision History	100

For general information about mechanical repair related issues, refer to 1220-1333: Generic Repair Manual - mechanical



1 Exterior Views

1.1 J20, J20i



2 Tools

SPECIAL TOOLS

1. Torque Screwdriver
2. Bits (T5)
3. Bits (T6)
4. Bits (JCIS No 0)
5. Front Opening Tool
6. Guitar Pick
7. Flex Film Assembly Tool
8. Camera Removal tool



For part no's on the tools above, refer to the 'Tools Catalogue/Matrix'!

STANDARD TOOLS

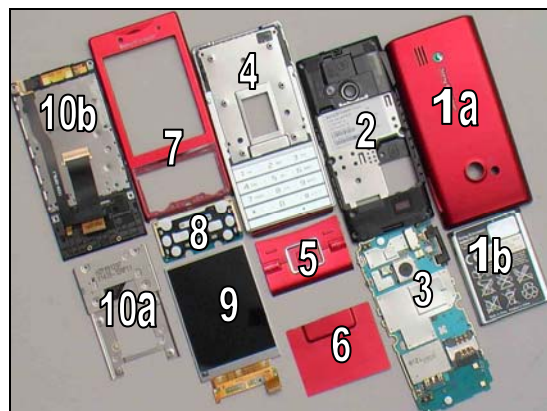
Tweezers (ESD-safe & non-metallic)



3 Disassembly

The disassembly is done in the following order:

1. Battery Cover (a) & Battery (b)
2. Lower Rear Cover Frame Assy
3. Main PCBA
4. Lower Front Cover Assy
5. Sub Keypad
6. Deco Sheet
7. Upper Front Cover Assy
8. Sub Keyboard Assy
9. Display
10. Hinge Slide (a) & Upper Rear Cover Assy (b)



3.1 Battery Cover & Battery

Insert the front opening tool to release the Battery Cover.



Insert the front opening tool to release this side.



Do the same for the opposite side.

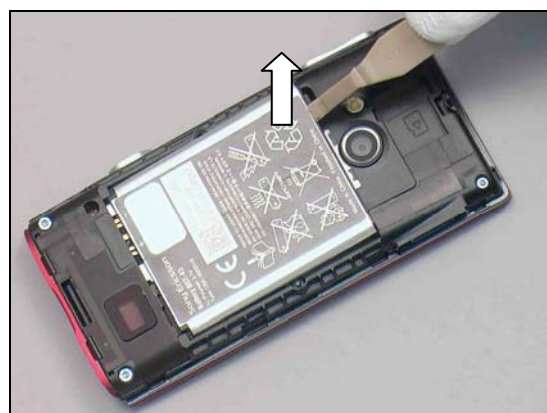


Disassembly

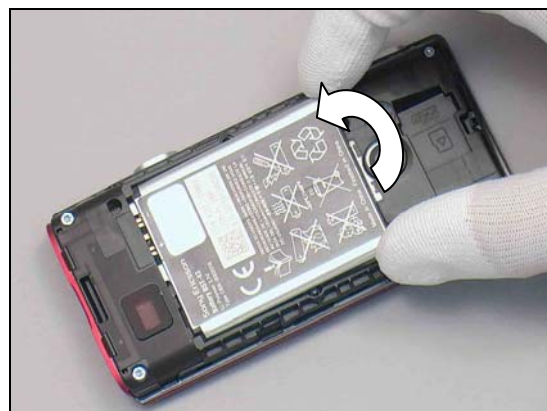
Lift the bottom of the Battery Cover and remove it.



Raise the bottom of the Battery to release it.



Remove the Battery.



3.2 Lower Rear Cover Frame Assy

Remove the four screws by a torque screwdriver with T5 Bits.



Disassembly

Remove the two screws by a torque screwdriver with T6 Bits.



There are five hooks securing the Lower Rear Cover located as shown.



Insert the guitar pick into the right side of the Rear Cover Assy as shown.



Unsnap this side by sliding a guitar pick in the direction indicated by the arrow.



Disassembly

Do the same to the other side.



Lift up the bottom of the Lower Rear Cover.

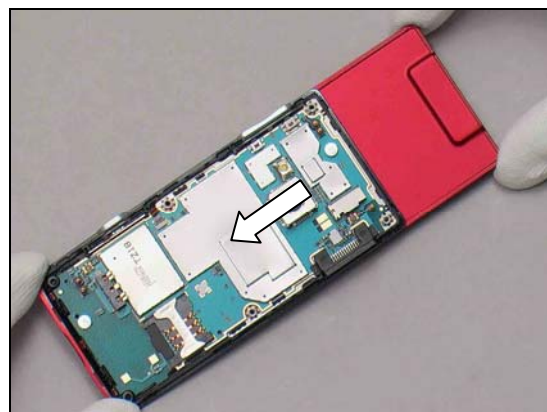


Remove the Lower Rear Cover.



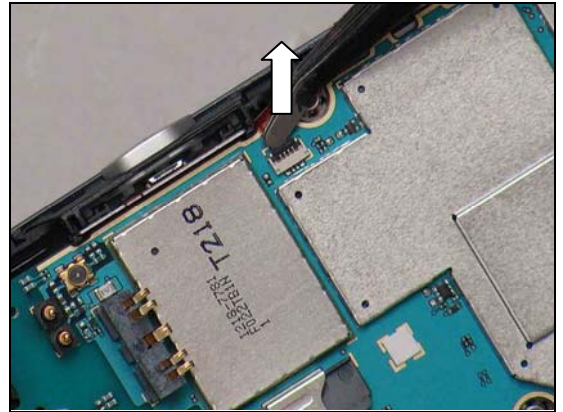
3.3 Main PCBA

Slide to open the phone.

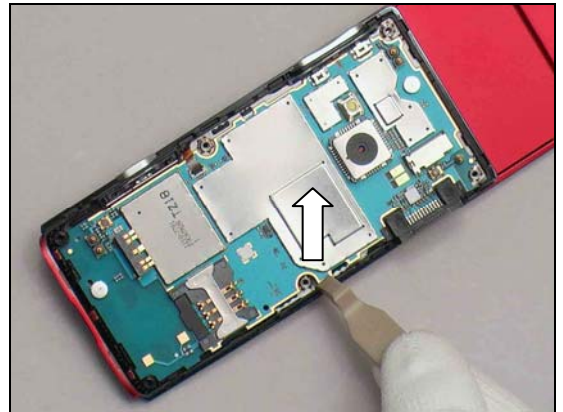


Disassembly

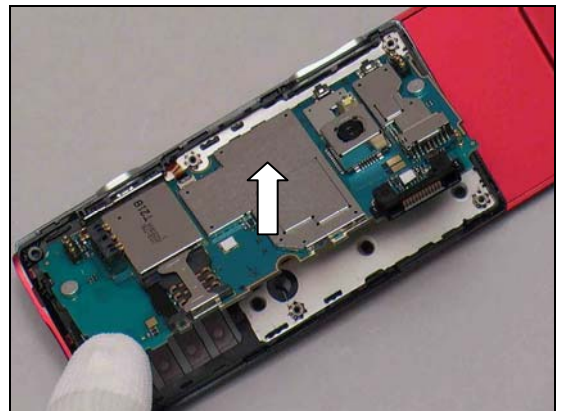
Unlock the ZIF connector with a flex film assembly tool.



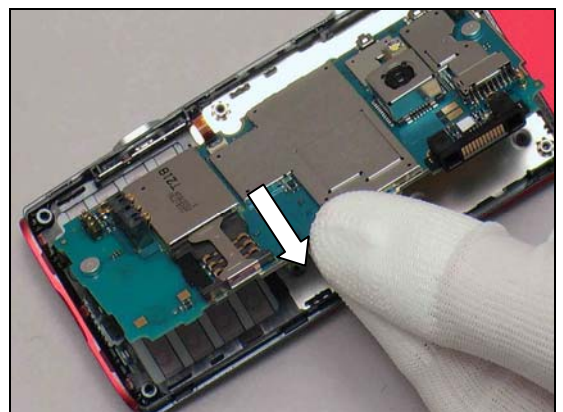
Release one side of the main PCBA with a front opening tool.



Lift this side of the main PCBA to an angle of approximately 30 degrees.

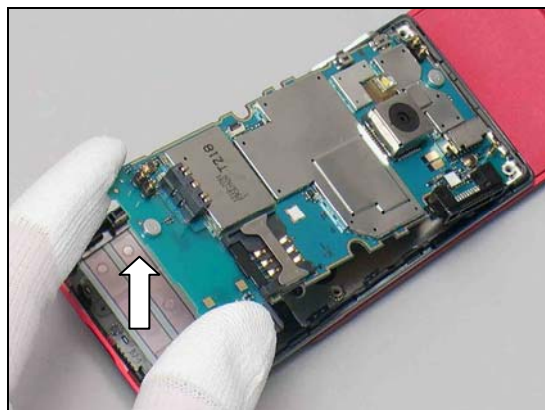


Pull the main PCBA outwards to release the Main Camera Key FPC from the ZIF connector.

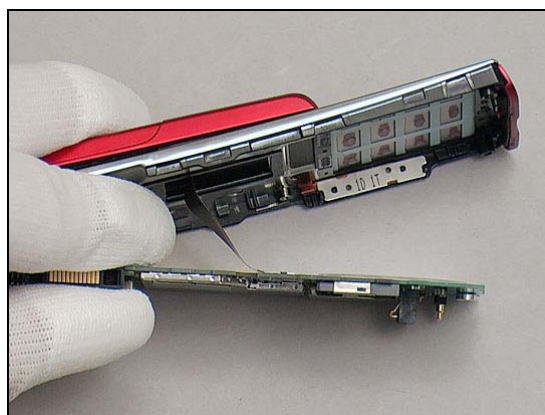


Disassembly

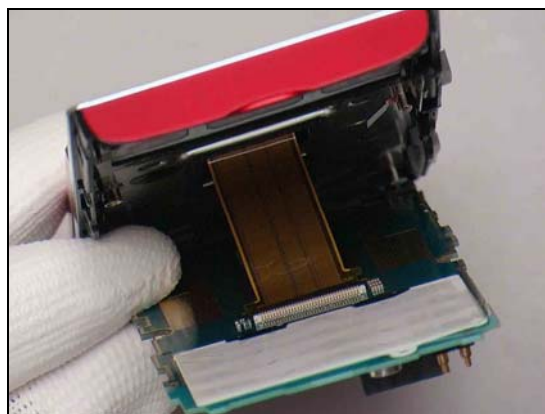
Lift the bottom of the main PCBA to an angle of approximately 30 degrees.



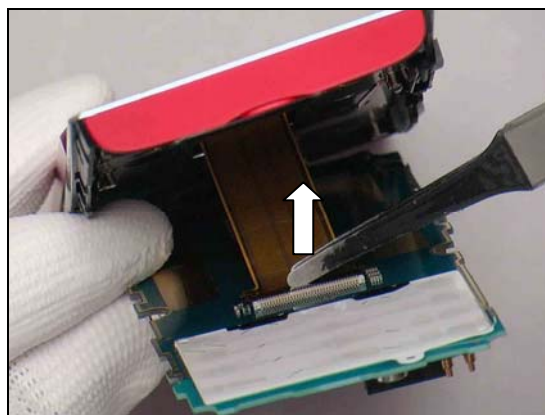
Insert the First Finger into the position beside the System Connector as shown.



Hold the unit like this.

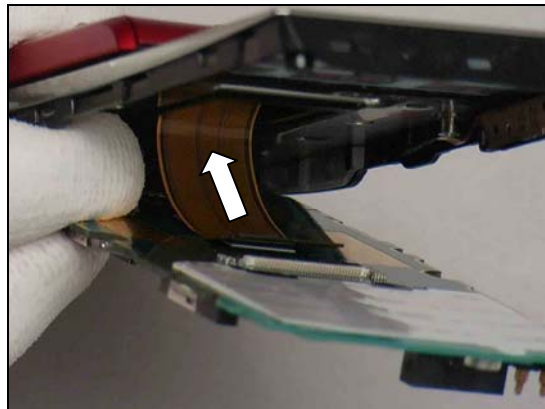


Unlock the ZIF connector with the flex film assembly tool.

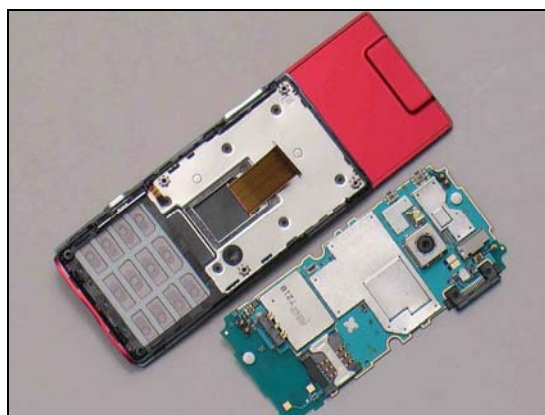


Disassembly

Release the Main FPC from the ZIF connector.

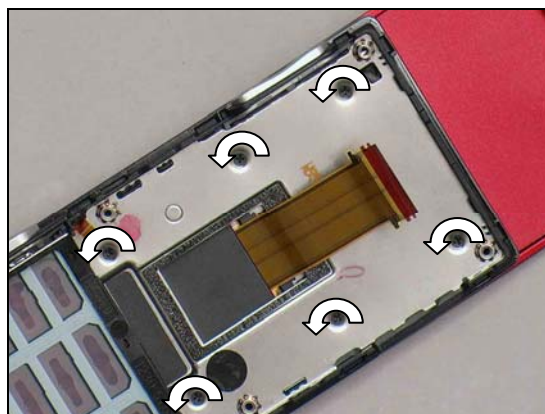


Separate the main PCBA and the Unit carefully.

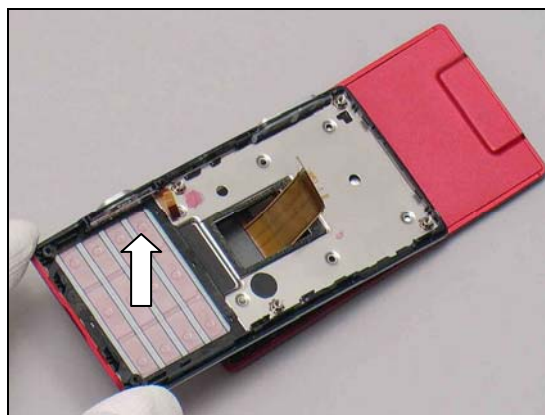


3.4 Lower Front Cover Assy

Remove the six screws with the torque screwdriver with JCIS No 0.

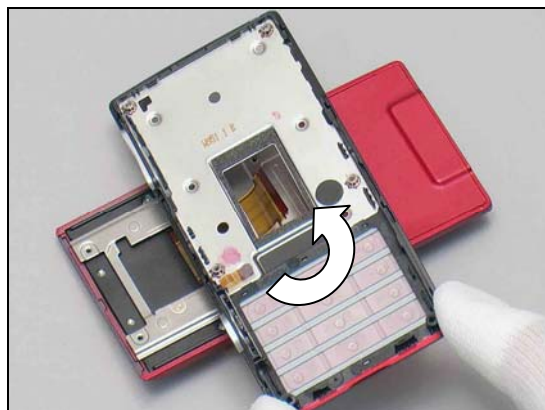


Lift up the Lower Front Cover Assy.

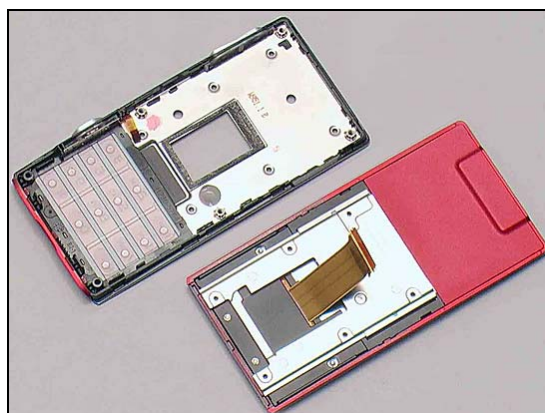


Disassembly

Turn round the Lower Front Cover Assy 90 degree.



Separate the Upper unit and the Lower Front Cover Assy.



3.5 Sub Keypad

Turn over the Front unit.



There are nine hooks securing the Sub Keypad located around as shown.



Disassembly

Unsnap the bottom hooks with a front opening tool.

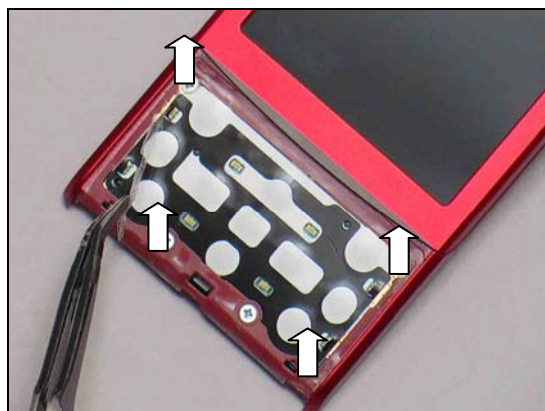


Pull upwards with fingers to unsnap the Sub Keypad and remove it.

Scrap it if it's damaged!



Peel off the adhesive with a flex film assembly tool.



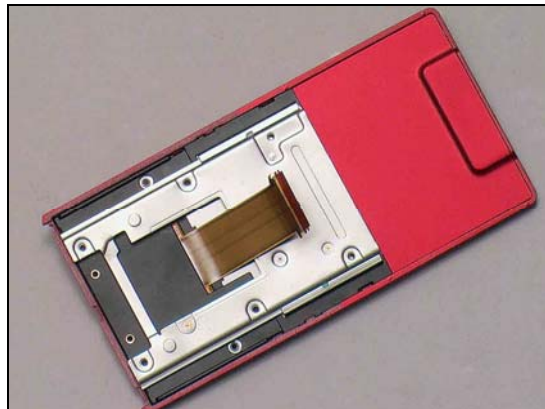
Remove the two screws with a Torque Screwdriver with JCIS No 0.



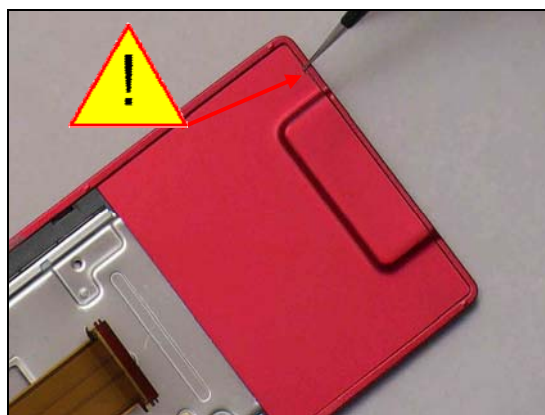
Disassembly

3.6 Deco Sheet

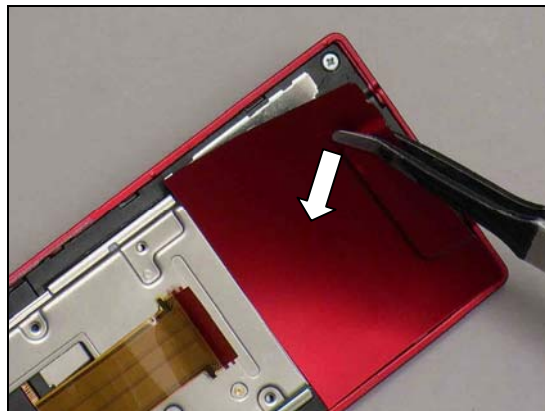
Turn over the slider unit.



Insert the Tweezers into the hole of the Deco sheet to open the corner.



Detach the Deco Sheet from the corner by flex film assembly tool.



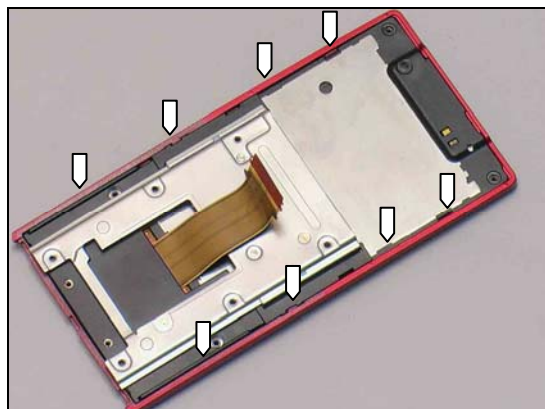
3.7 Upper Front Cover Assy

Remove the two screws by the torque screwdriver with JCIS No 0.

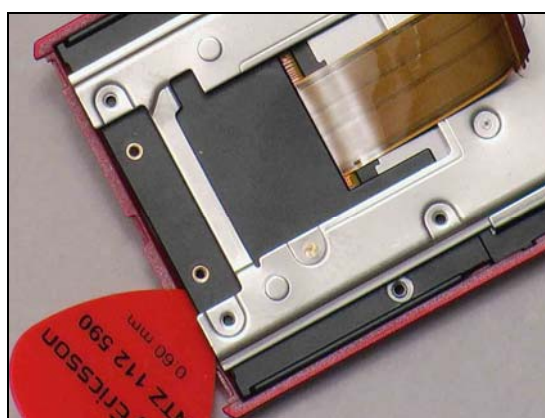


Disassembly

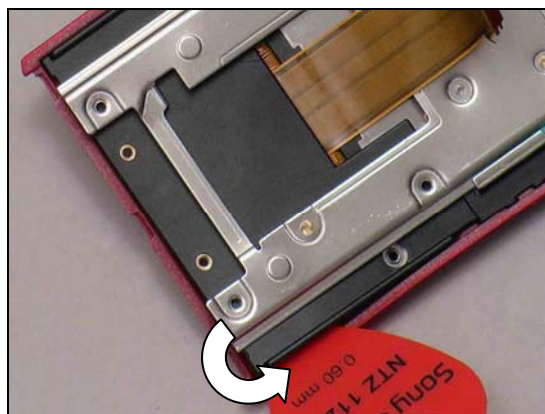
There are eight hooks located around as shown.



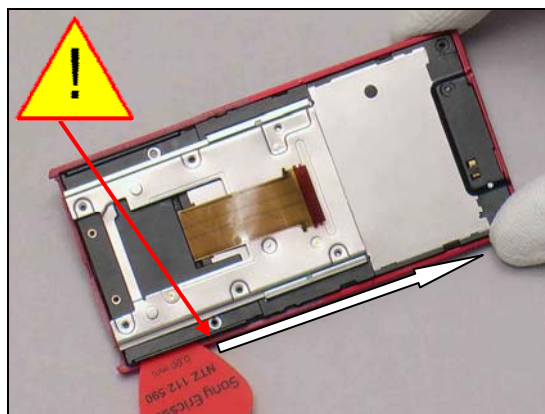
Insert the guitar pick underneath the Upper front Cover.



Slide the guitar pick into the side of the Unit.

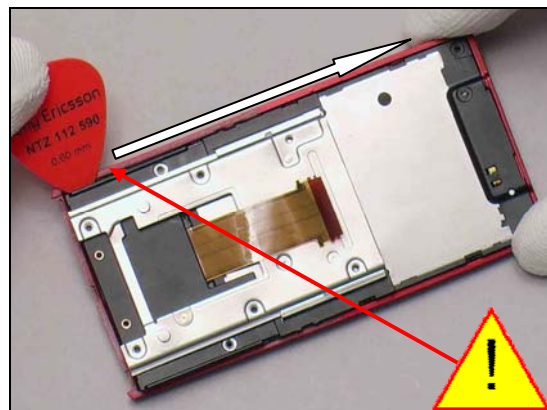


Release the hooks of this side by sliding the guitar pick as shown.



Disassembly

Do the same on the opposite side.



Lift to remove the Upper Rear Cover.



Separate the Upper Front Cover Assy and the Display unit.



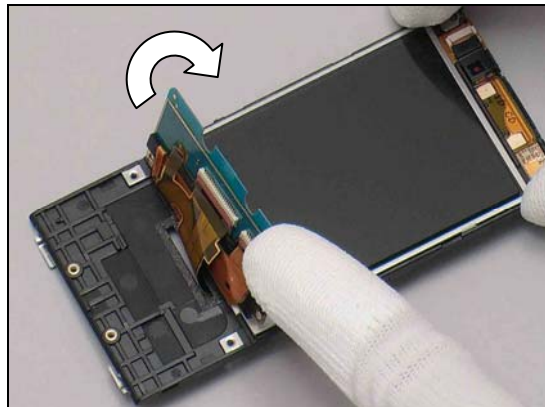
3.8 Sub Keyboard Assy

Remove the two screws with a torque screwdriver with JCIS No 0.

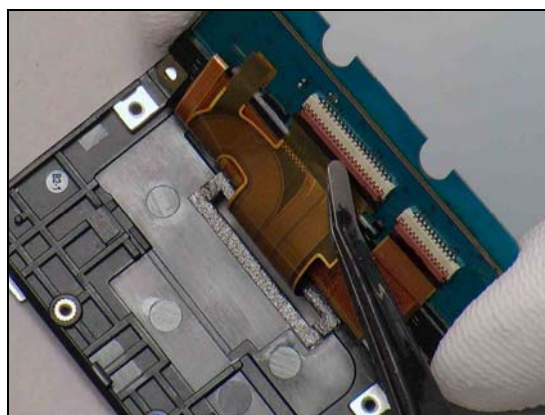


Disassembly

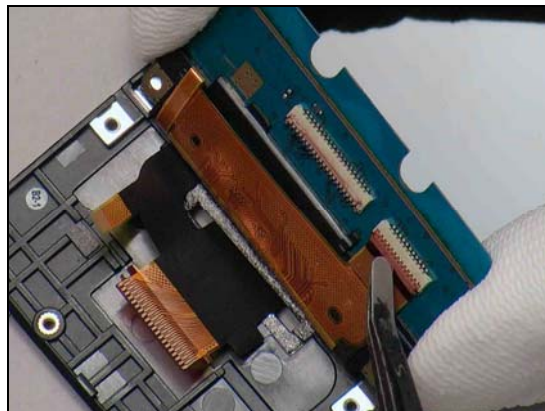
Lift the sub keyboard up and turn it approximately 90°.



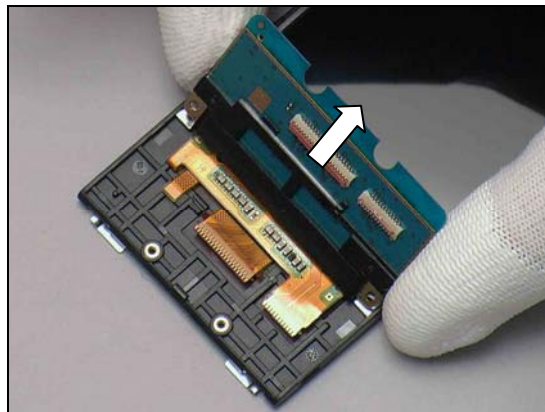
Unlock the ZIF connector and release the Main FPC by using a flex film assembly tool.



Unlock the ZIF connector and release the Main Display by using a flex film assembly tool.



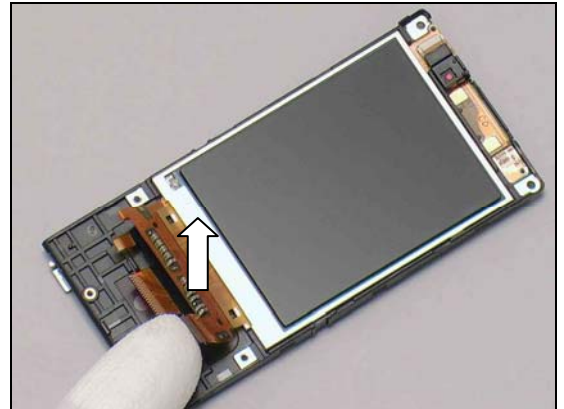
Remove the Sub Keyboard.



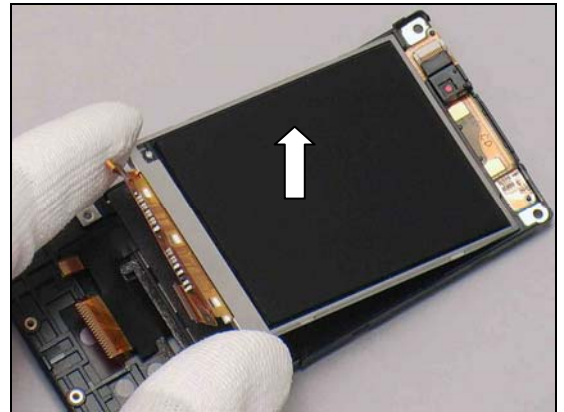
Disassembly

3.9 Display

Lift the Display FPC upwards to release the Display.

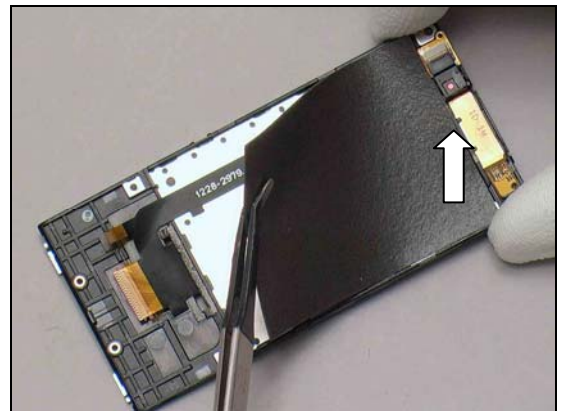


Remove the Display.

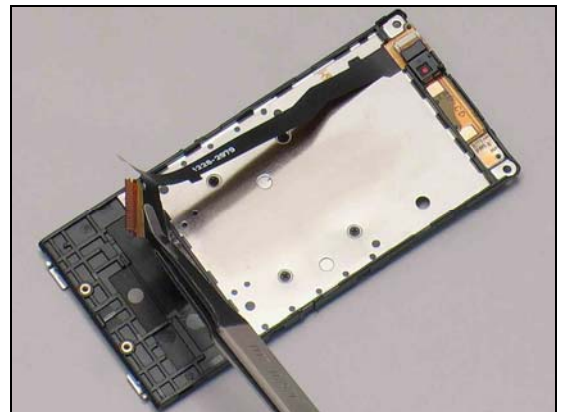


3.10 Hinge Slide & Upper Rear Cover Assy

Detach the Display Gasket carefully with a flex film assembly tool.



Thread the Main FPC through the slot on the Upper Rear Cover by a flex film assembly tool.

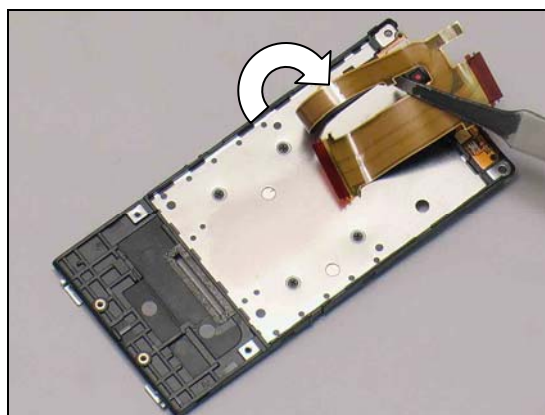


Disassembly

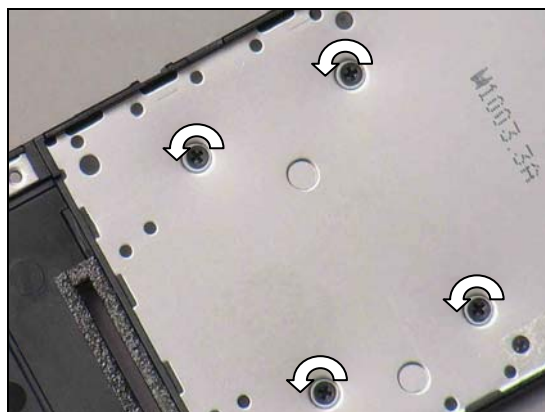
Leave the Main FPC straight like this.



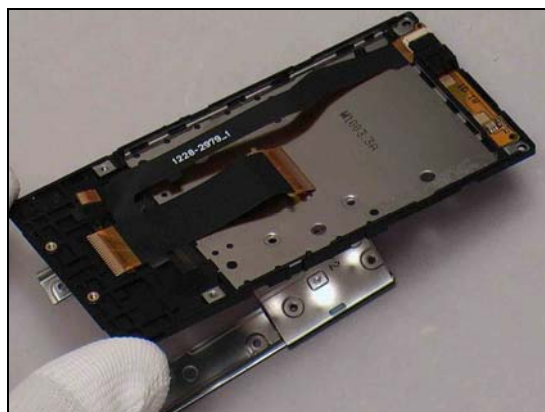
Turn the Main FPC backwards by using flex film assembly tool.



Remove the four screws by using the Torque Screwdriver with JCSI No 0.

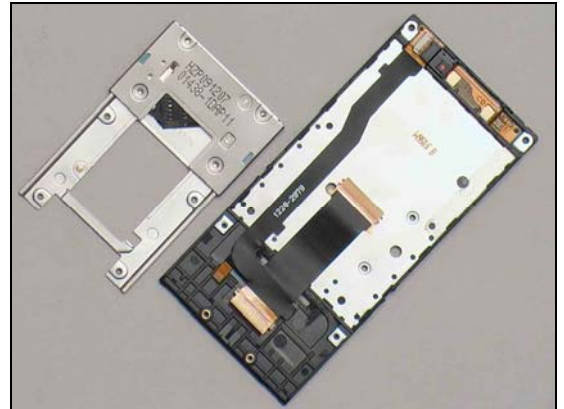


Lift up the Upper Rear Cover.



Disassembly

Separate the Hinge Slide and the Upper Rear Cover Assy.



4 Replacement

4.1 Battery Cover

Follow the 3.1 Battery Cover Removal instructions!

Prepare a new Battery Cover.

Follow the 5.10 Battery Cover Installation instructions!



4.2 Lower Rear Cover Frame

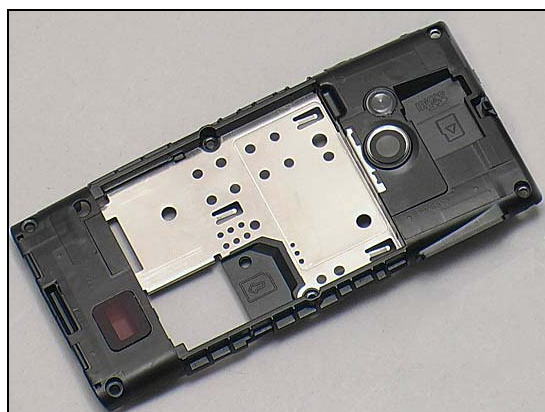
Follow the 3.1 – 3.2 Disassembly instructions!

Follow the 4.8., 4.25 and 4.36 Removal instructions!

Prepare a new Lower Rear Cover Frame.

Follow the 4.8., 4.25 and 4.36 Installaton instructions!

Follow the 5.9 – 5.10 Reassembly instructions!



4.3 Lower Front Cover

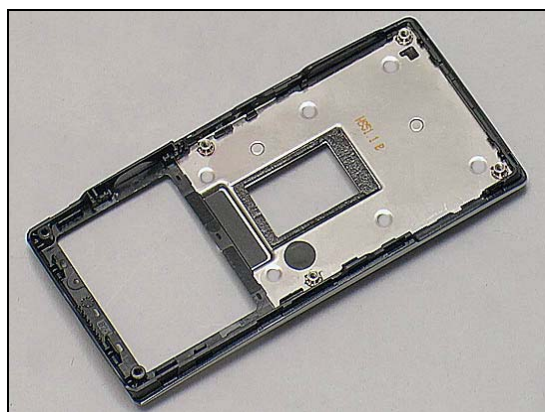
Follow the 3.1 – 3.4 Disassembly instructions!

Follow the 4.13, 4.14, 4.19 and 4.37 Removal instructions!

Prepare a new Lower Front Cover.

Follow the 4.13, 4.14, 4.19 and 4.37 Installlation instructions!

Follow the 5.7 – 5.10 Reassembly instructions!

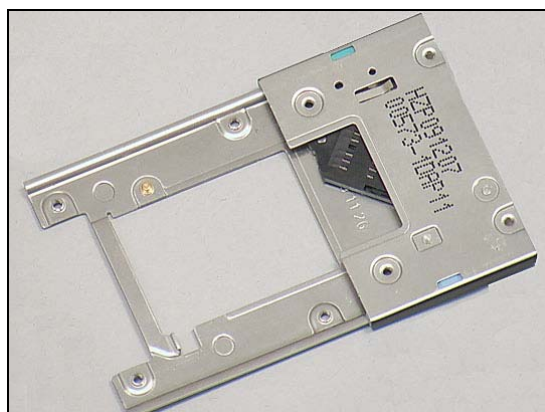


4.4 Hinge Slide

Follow the 3.1– 3.10 Disassembly instructions!

Prepare a new Hinge Slide.

Follow the 5.1 – 5.10 Reassembly instructions!



Replacement

4.5 Upper Rear Cover

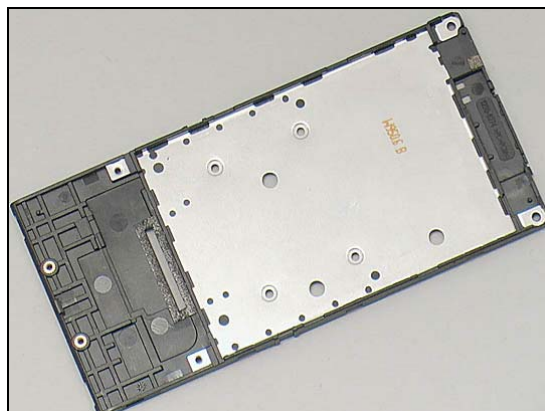
Follow the 3.1 – 3.10 Disassembly instructions!

Follow the 4.16, 4.27, and 4, 28 Removal instructions!

Prepare a new Upper Rear Cover.

Follow the 4.16, 4.27, and 4, 28 Installation instructions!

Follow the 5.1 – 5.10 Reassembly instructions!



Replacement

4.6 Camera 5 Mpixel

Follow the 3.1 – 3.2 Disassembly instructions!
Follow the 4.15 Removal instructions!

Carry out the Removal as described below.

Prepare a new Camera 5 Mpixel.

Carry out the Installation as described below.

Follow the 4.15 Installation instructions!

Follow the 5.9 – 5.10 Reassembly instructions!

REMOVAL

Insert the Camera Removal tool into the camera socket as the position shown in the picture.

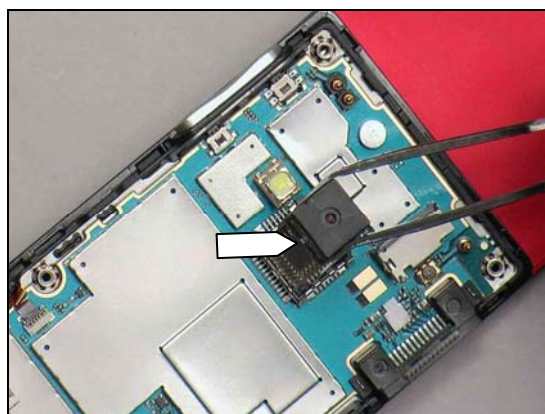
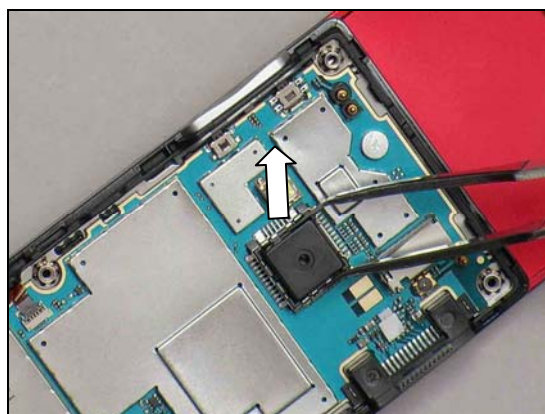
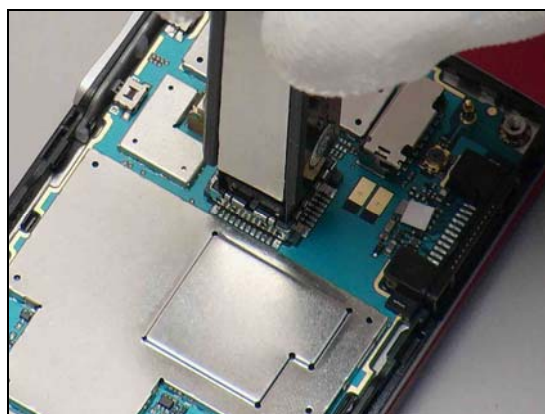
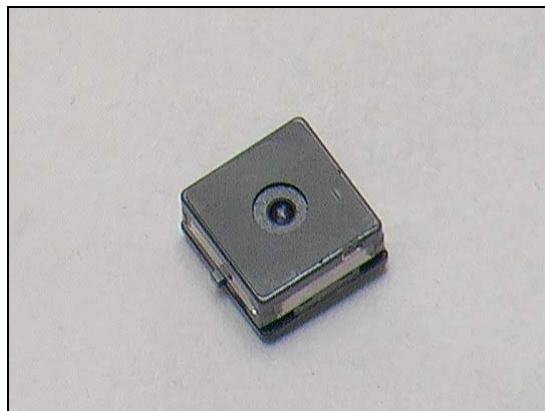
Note the orientation of the blades on the Camera Removal Tool in relation to the position of the camera socket!

Remove the Camera 5 Mpixel.

INSTALLATION

Place the Camera 5 Mpixel inside the socket.

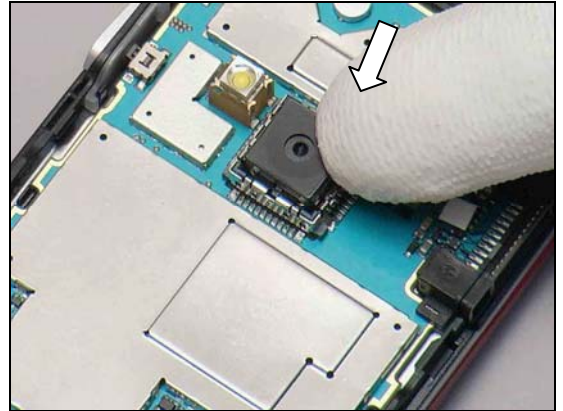
Note the keying, camera – socket!



Replacement: Camera 5 Mpixel

Press the Main Camera to the bottom of the socket.

Note: Do not touch the camera lens!



Replacement

4.7 Co Branding

Follow the 3.1 Disassembly instructions!

Carry out the Removal as described below.

Prepare a new Co Branding.

Carry out the Installation as described below.

Follow the 5.10 Reassembly instructions!

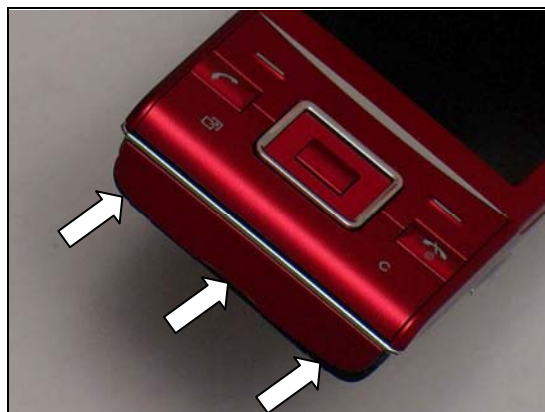
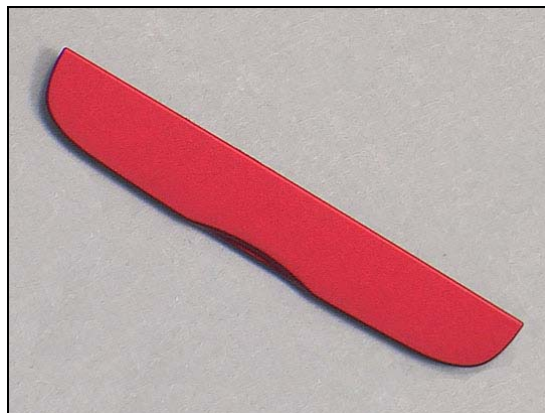
REMOVAL

There are three hooks located as shown.

Insert a flex film assembly tool into right side to release the hook.

Pull off the Co-Branding from the right side to left.

Scrap! Not to be reused!



Replacement: Co Branding

INSTALLATION

Hold the Co Branding and place it on the Rear Cover as shown in picture.



Press to snap the three hooks.



Press along the surface to make the Co-Branding securely attached.



Replacement

4.8 Core Unit Label

Follow the 3.1 – 3.2 Disassembly instructions!

Carry out the Removal as described below.

Prepare a new Core Unit Label.

Carry out the Installation as described below.

Follow the 5.9 – 5.10 Reassembly instructions!

REMOVAL

Read the old Core Unit Label and/or write the information into the 'LabelMake' program before removal.

Carefully remove the Label by using the flex film assembly tool.

INSTALLATION

Check that the proper label format is loaded in the Zebra printer and write a new Label by using the 'LabelMake' software.

Hold the label and attach by flex film assembly tool.

Press along the surface to make Label securely attached.

One label only is allowed!



Replacement

4.9 Deco Sheet

Carry out the Removal as described below.
Prepare a new Deco Sheet.
Carry out the Installation as described below.

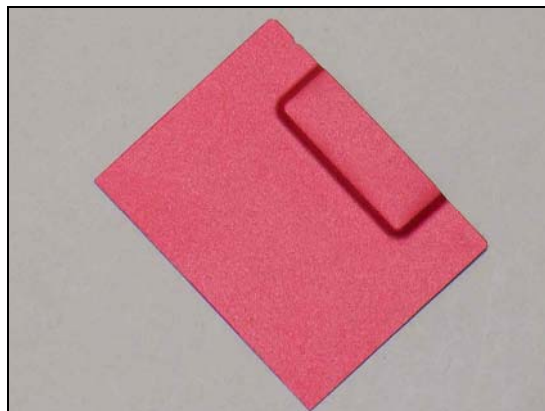
REMOVAL

Insert the Tweezers into the hole of the Deco sheet to open the corner.

Detach the Deco Sheet from the corner by the flex film assembly tool.

INSTALLATION

Attach the bottom side of the Deco Sheet on back of the handset.



Replacement: Deco Sheet

Press with your finger to make it properly attached.



Replacement

4.10 Display

Follow the 4.34, 4.9, 4.35 and 4.29 Removal instructions!

Carry out the Removal as described below.

Prepare a new Display.

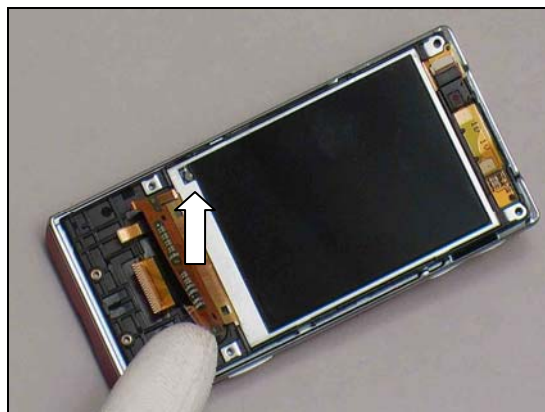
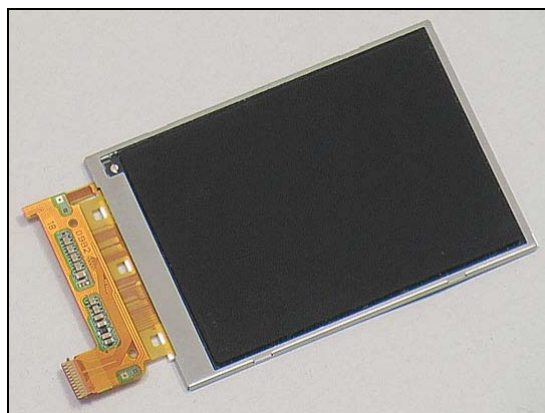
Carry out the Installation as described below.

Follow the 4.29, 4.35, 4.9 and 4.34 Installation instructions!

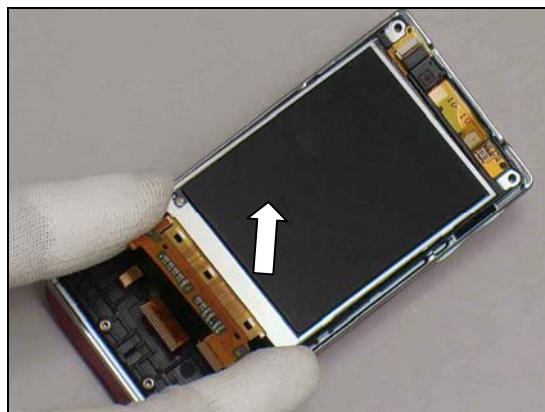
The Sub Keypad Adhesive cannot be reused. Prepare a new Sub Keypad Adhesive.

REMOVE

Lift the Display FPC upwards to release the Display.

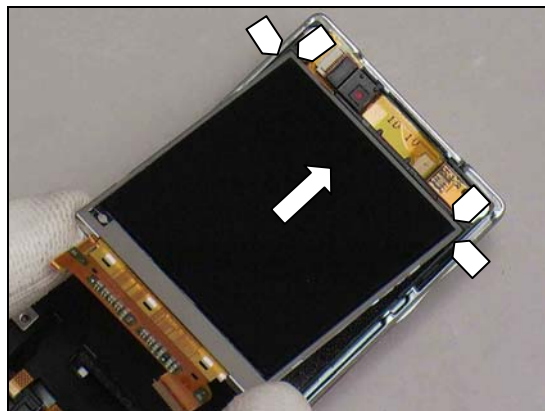


Remove the Display.



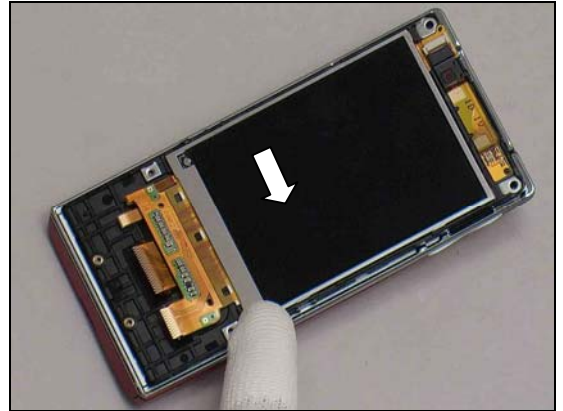
INSTALLATION

Install the Display in the alignment of the top corners of the Upper Rear Cover as shown.



Replacement: Display

Press the Display into its proper position.



Replacement

4.11 Display Gasket

Follow the 4.34, 4.9, 4.35, 4.29 and 4.10 Removal instructions!

Carry out the Removal as described below.

Prepare a new Display Gasket.

Carry out the Installation as described below.

Follow the 4.10, 4.29, 4.35, 4.9 and 4.34 Installation instructions!

The Sub Keypad Adhesive cannot be reused. Prepare a new Sub Keypad Adhesive.

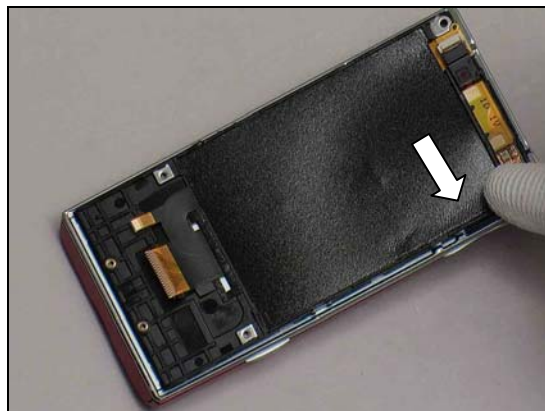
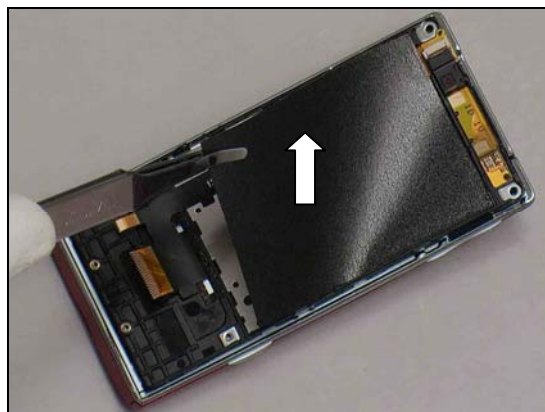
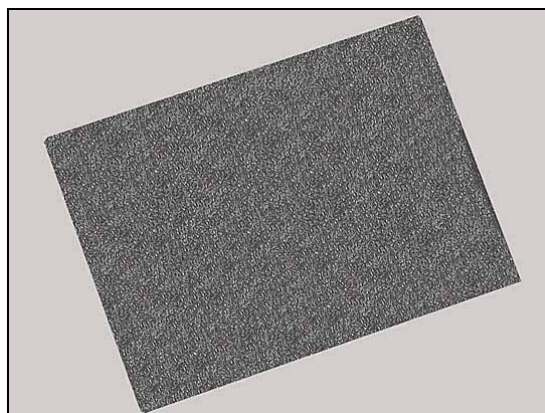
REMOVE

Detach the Display Gasket carefully with a flex film assembly tool.

INSTALLATION

Install the Display Gasket with a flex film assembly tool in the alignment of the right upper corner of the Upper Rear Cover as shown.

Press to make the Display Gasket securely attached



Replacement

4.12 Liquid Intrusion Indicator

INSPECTION

To check whether the Liquid Intrusion Indicator (1) has been activated (reddish color), just remove the Battery Cover.

If activated:

Follow the 3.1 – 3.2 Disassembly instructions!

Carry out the replacement as described below.

Follow the 5.9 – 5.10 Reassembly instructions!



INSPECTION

To check whether the Liquid Intrusion Indicator (2) has been activated (reddish color), follow the 3.1 – 3.2 Disassembly instructions!

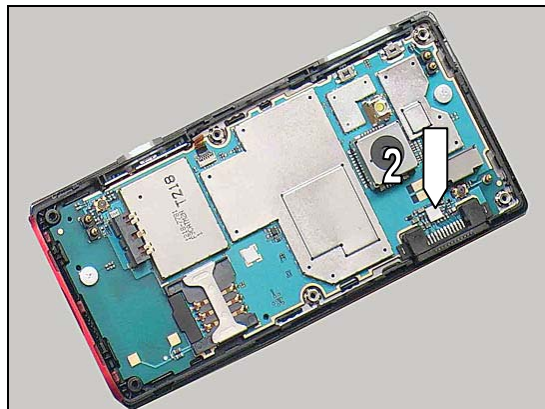
If activated:

Carry out the Removal as described below.

Prepare a Liquid Intrusion Indicator.

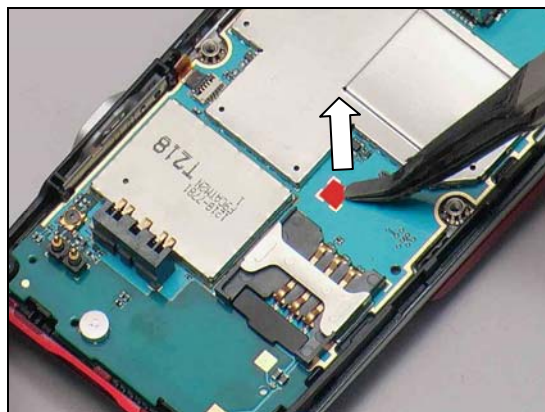
Carry out the Installation as described below.

Follow the 5.9 – 5.10 Reassembly instructions!



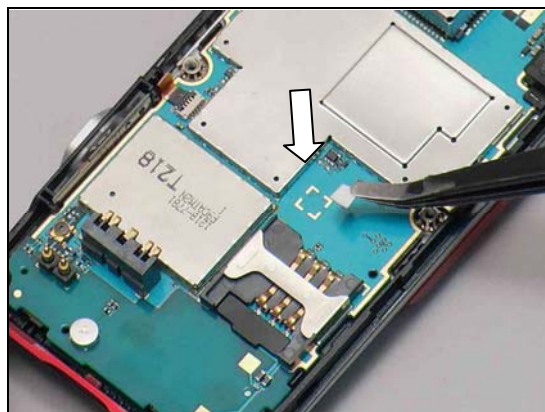
REMOVAL

Remove the activated Liquid Intrusion Indicator with the flex film assembly tool.



INSTALLATION

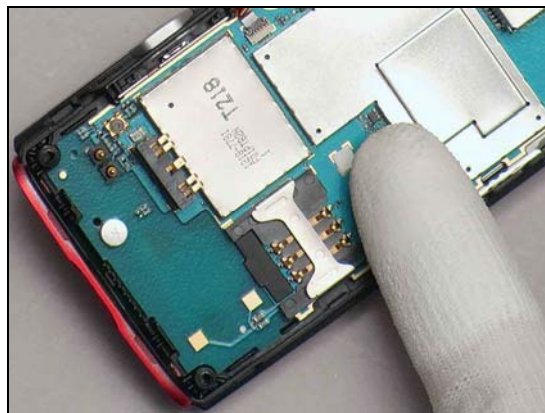
Attach the new Liquid Intrusion Indicator with the flex film assembly tool.



Replacement: Liquid Intrusion Indicator

Press to make the new Liquid Intrusion Indicator securely attached.

It is the same the replacement method for Liquid Intrusion Indicator (2).



Replacement

4.13 Main Camera Key

Follow the 3.1 – 3.3 Disassembly instructions!
Follow the 4.14 Removal instructions!

Carry out the Removal as described below.

Prepare a new Main Camera Key.

Carry out the Installation as described below.

Follow the 4.14 Installation instructions!

Follow the 5.8 – 5.10 Reassembly instructions!

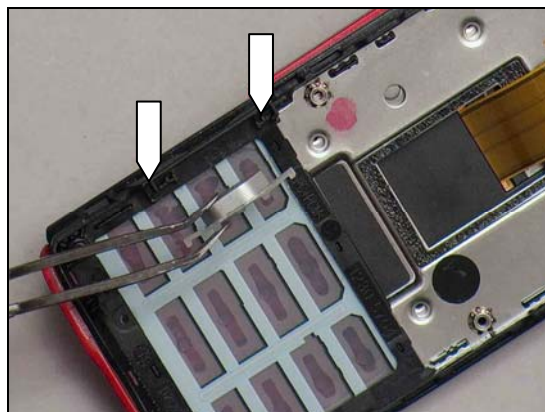
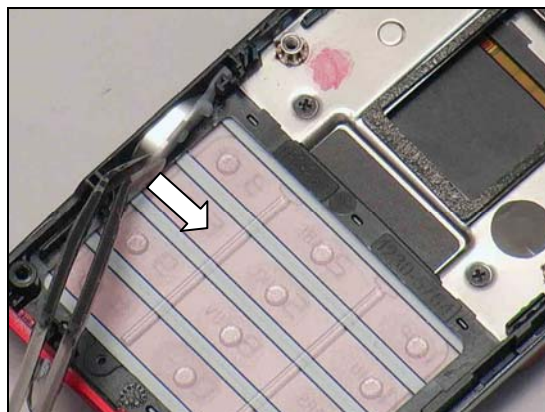
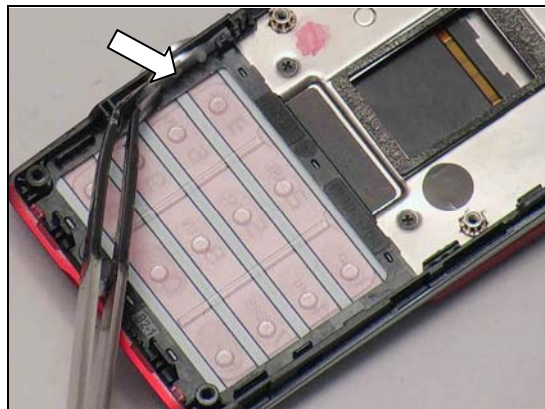
REMOVAL

Push off with the flex film assembly tool on the Camera Key until the key becomes released.

Remove the Camera Key.

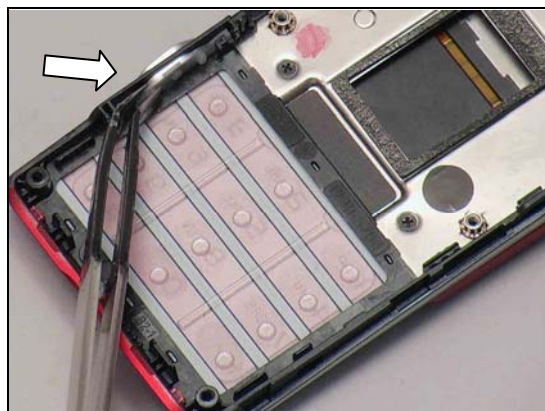
INSTALLATION

There are two pockets to fit the Camera Key.

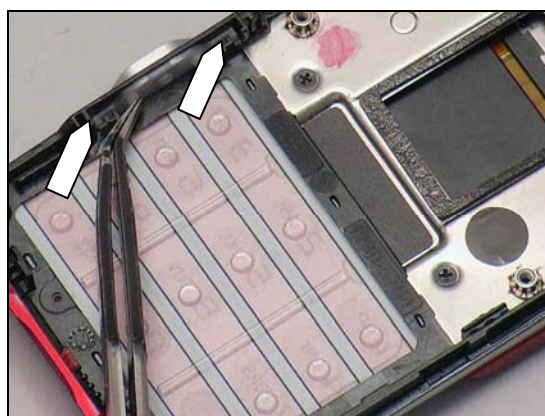


Replacement: Main Camera Key

Place the Camera Key on the Lower Rear Cover.



Push the Main Camera Key inside its corresponding pockets by the Flex film assembly tool.



Replacement

4.14 Main Camera Key FPC

Follow the 3.1 – 3.3 Disassembly instructions!

Carry out the Removal as described below.

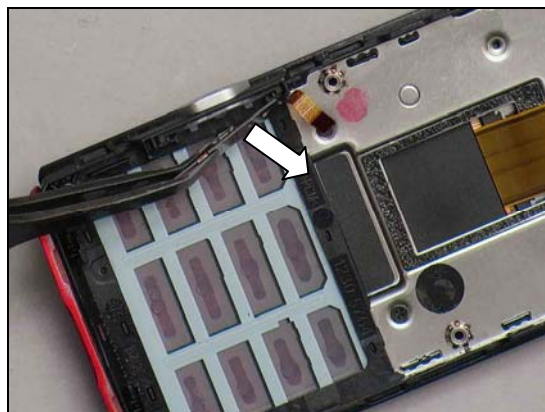
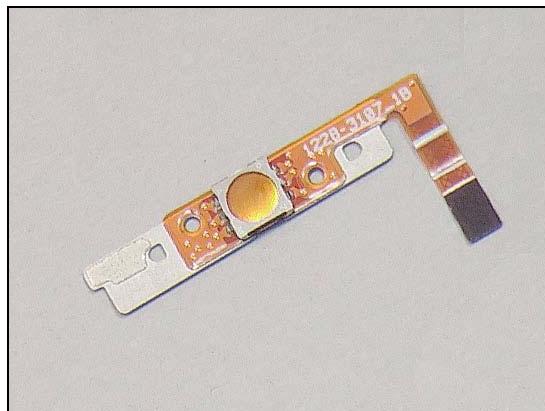
Prepare a new Main Camera Key FPC.

Carry out the Installation as described below.

Follow the 5.8 – 5.10 Reassembly instructions!

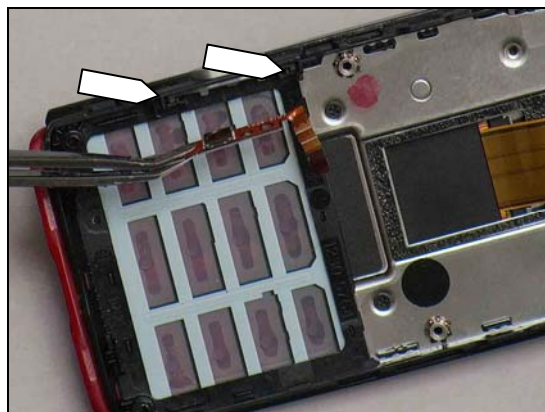
REMOVAL

Push off the Camera Key FPC by the Flex Film Assembly tool.

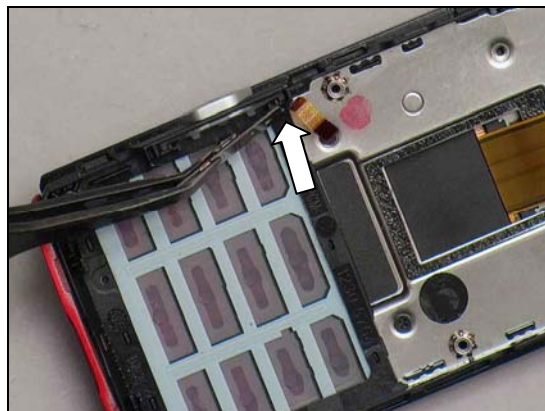


INSTALLATION

There are two pockets to fit the Camera Key FPC.

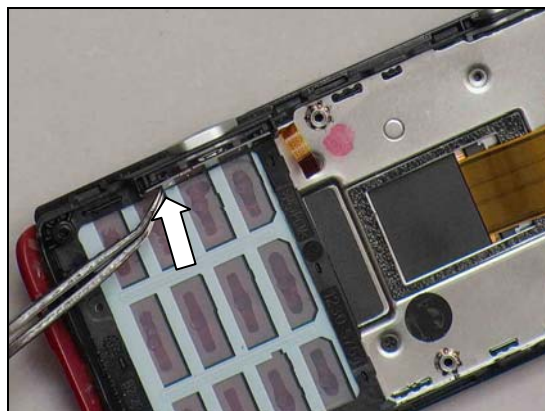


Place the Camera Key FPC to the back of the Camera Key.

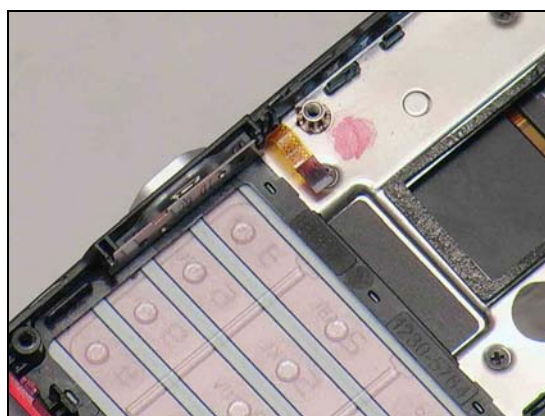


Replacement: Main Camera Key FPC

Push the new Main Camera Key FPC inside its corresponding pockets by the flex film assembly tool.



The Camera Key FPC should be properly installed as shown.



Replacement

4.15 Main Camera Socket Shielding

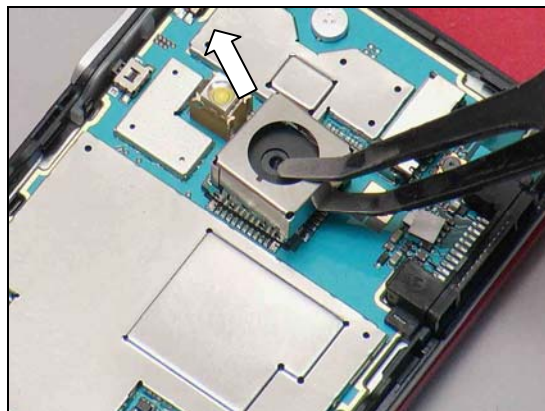
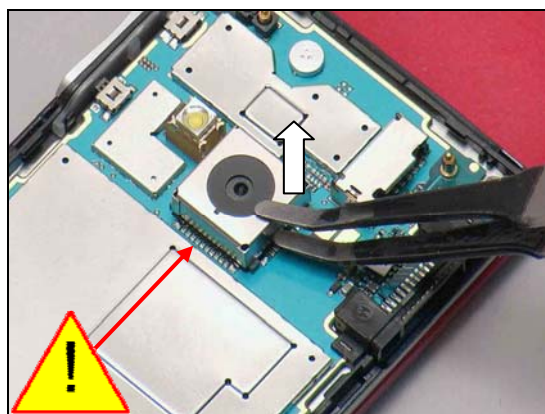
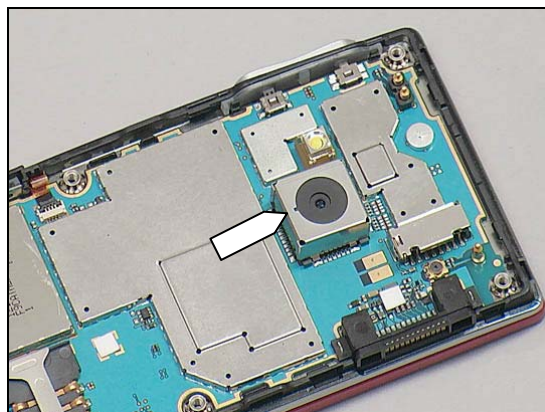
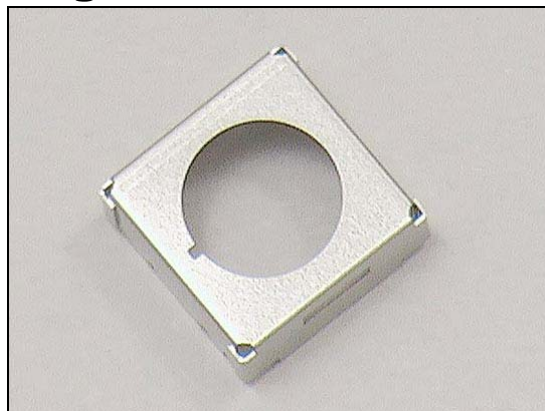
Follow the 3.1 – 3.2 Disassembly instructions!
 Carry out the Removal as described below.
 Prepare a Main Camera Socket Shielding.
 Carry out the Installation as described below.
Follow the 5.9 – 5.10 Reassembly instructions!

REMOVAL

Note the position of this mark on the Shield Can Lid.

Insert the flex film assembly tool into the corners of the Main Camera Socket Shielding to release it.

Remove the Main Camera Socket Shielding.

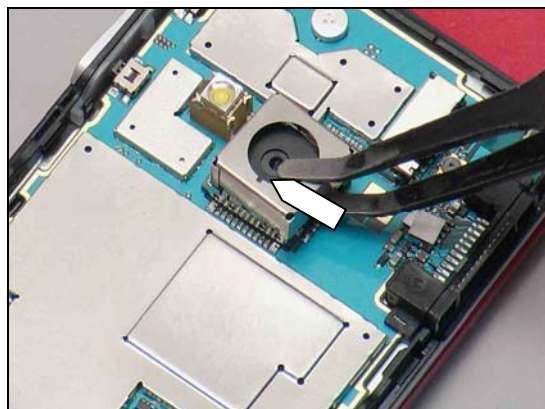


Replacement: Main Camera Socket Shielding

INSTALLATION

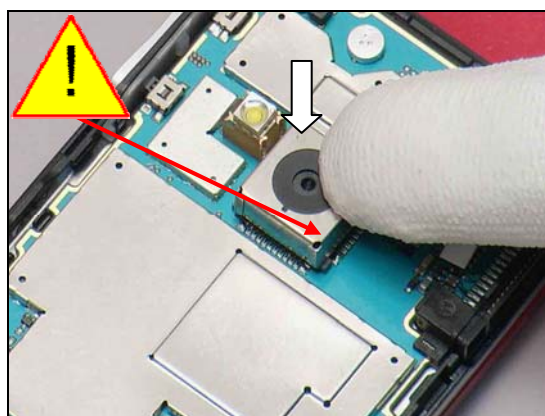
Place the Main Camera Socket Shielding on top of the Camera.

Note: The Main Camera Socket Shielding should be placed by the position holes as indicated by the pointer.

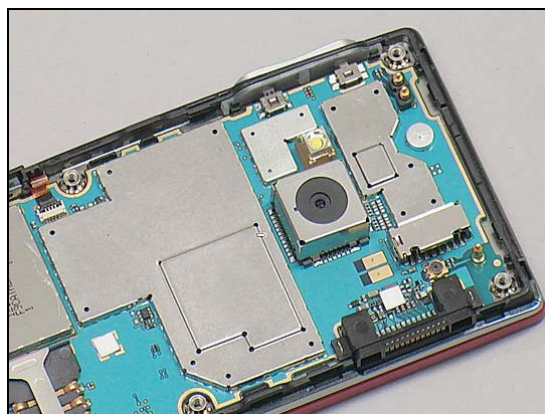


Press with your fingers to secure the lid into the camera socket.

Note: Do not touch the Camera Lens.



The Main Camera Socket Shielding should be properly installed as shown.



Replacement

4.16 Main FPC

Follow the 3.1 – 3.10 Disassembly instructions!

Follow the 4.27, 4.28 Removal instructions!

Carry out the Removal as described below.

Prepare a new Main FPC.

Carry out the Installation as described below.

Follow the 4.27, 4.28 Installation instructions!

Follow the 5.1 – 5.10 Reassembly instructions!

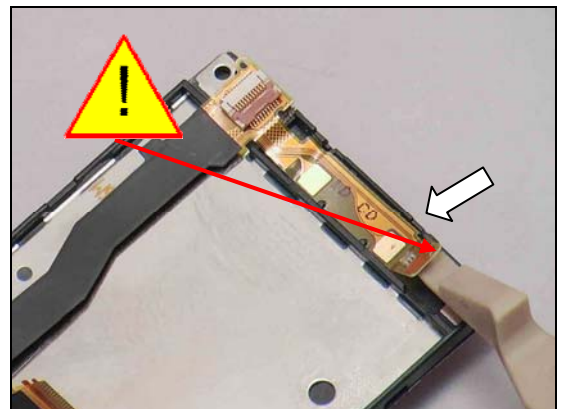
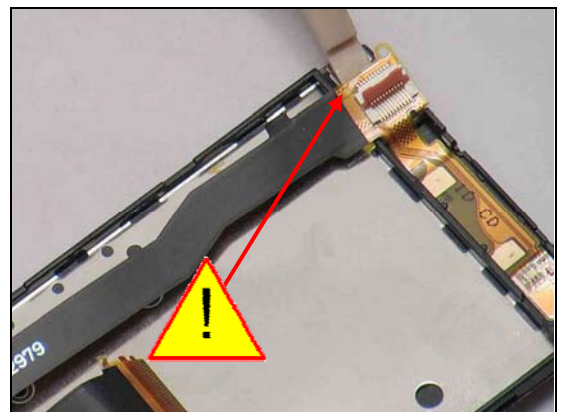
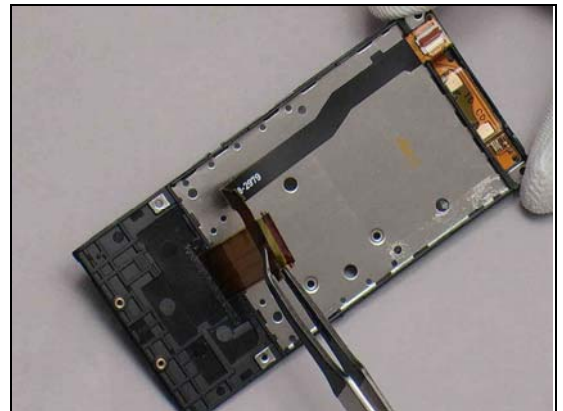
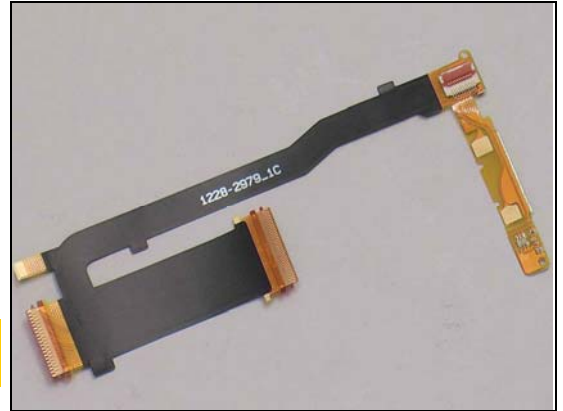
The Sub Keypad Adhesive cannot be reused. Prepare a new Sub Keypad Adhesive.

REMOVAL

Pull the Main FPC through the slot of the Slide Unit.

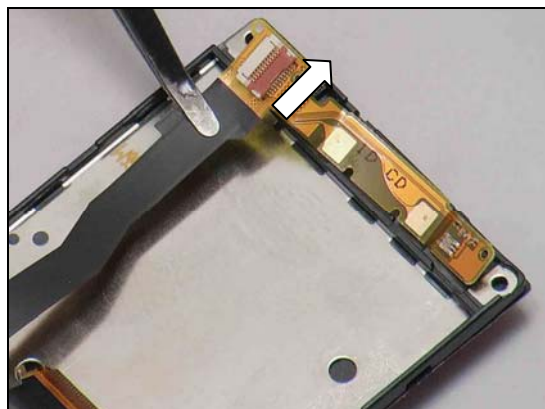
Release the Main FPC left side at the top with great care by the front opening tool.

Release the Main FPC right side.



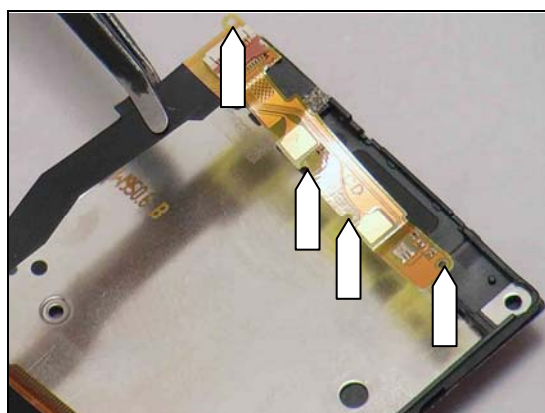
Replacement: Main FPC

Remove the Main FPC.

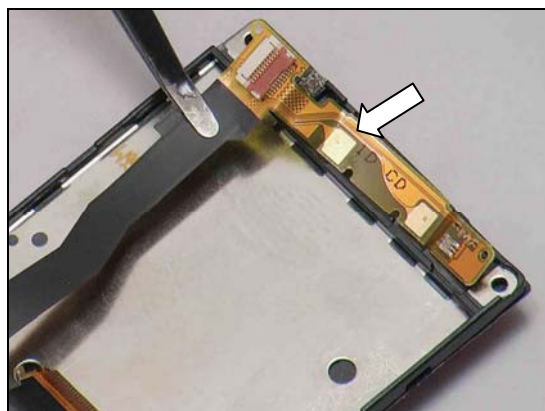


INSTALLATION

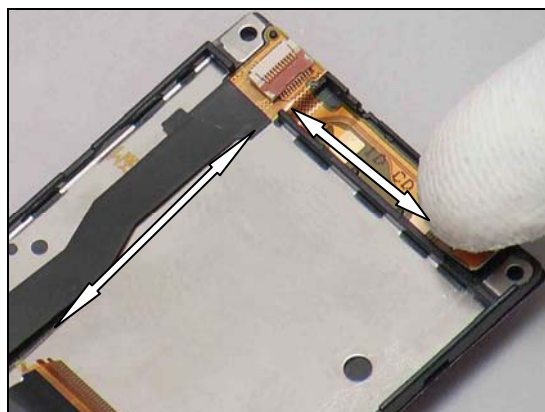
There are four guiding holes on the Main FPC as shown in picture!



Place the Main FPC according to the guiding pegs and holes.

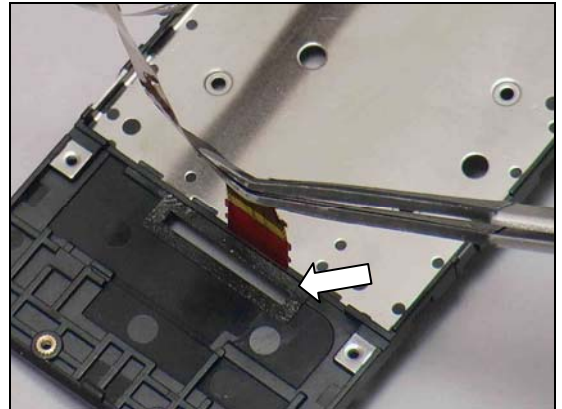


Press with your fingers to attach it to the Slide Unit.

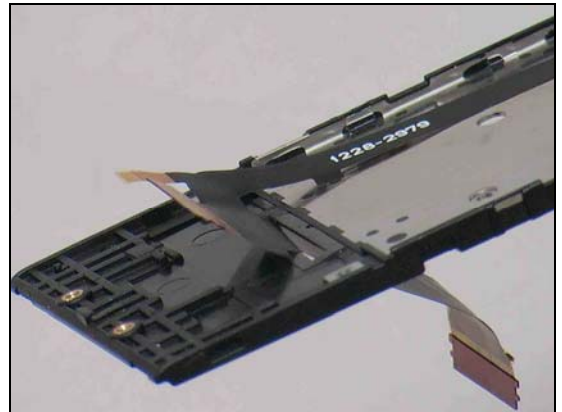


Replacement: Main FPC

Insert the Main FPC through the slot of the Slide Unit.



The Main FPC should place as shown in picture.



Replacement

4.17 Main Key Dome with Light Guide

Follow the 3.1 – 3.3 Disassembly instructions!

Carry out the Removal as described below.

Prepare a new Main Key Dome with Light Guide.

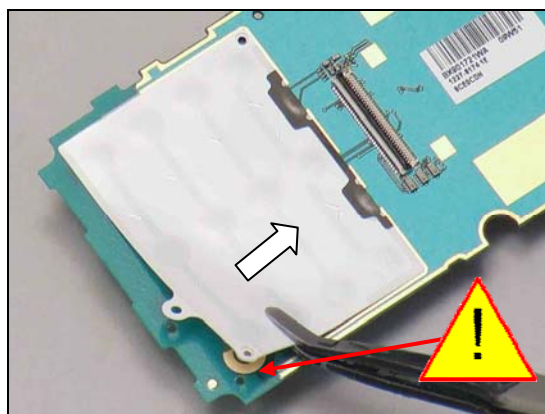
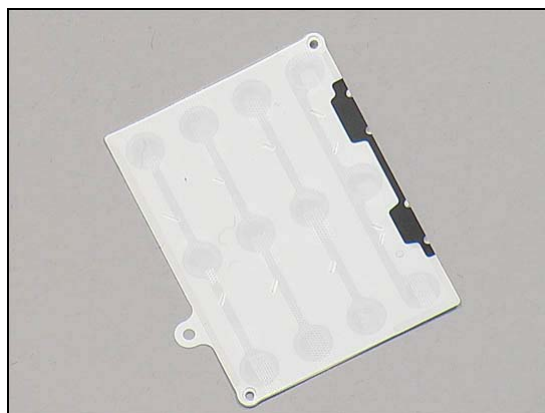
Carry out the Installation as described below.

Follow the 5.8 – 5.10 Reassembly instructions!

REMOVAL

Insert the flex film assembly tool in the corner carefully to peel off the Key Dome.

Scrap! Not to be reused!



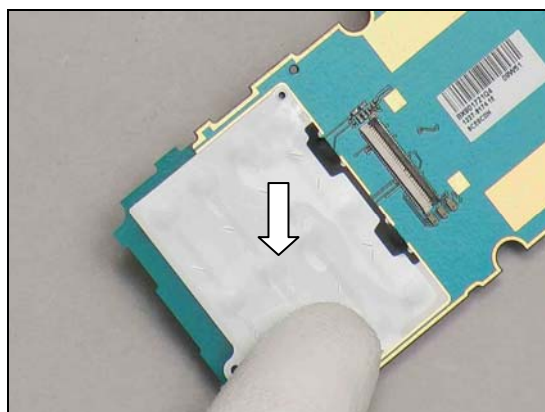
INSTALLATION

Place the Key Dome onto the PCBA.

Note: The Key Dome should be placed by the position holes as indicated by the pointers.



Press to make the Main Key Dome properly attached.



Replacement

4.18 Main Keypad Adhesive

Follow the 3.1 Disassembly instructions!

Follow the 4.19 Removal instructions!

Carry out the Removal as described below.

Prepare a new Main Keypad Adhesive.

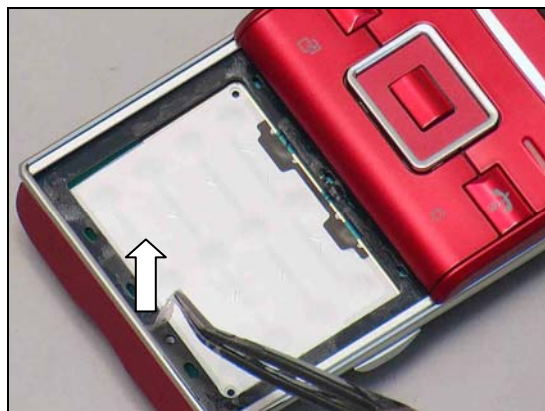
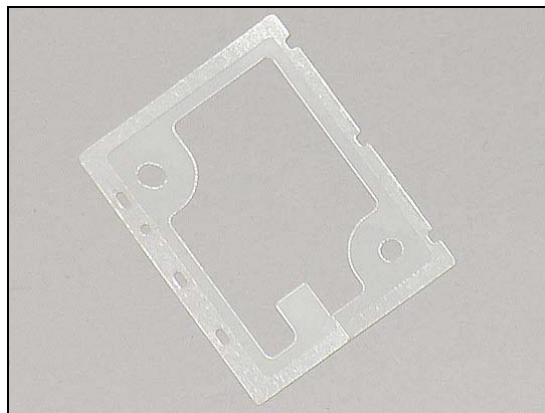
Carry out the Installation as described below.

Follow the 4.19 Installation instructions!

Follow the 5.10 Reassembly instructions!

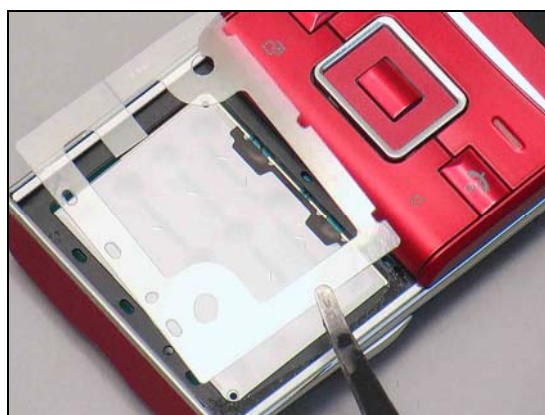
REMOVAL

Remove the Main Keypad Adhesive by flex film assembly tool.



INSTALLATION

Attach the Main Keypad Adhesive sheet on the Lower Front Cover.

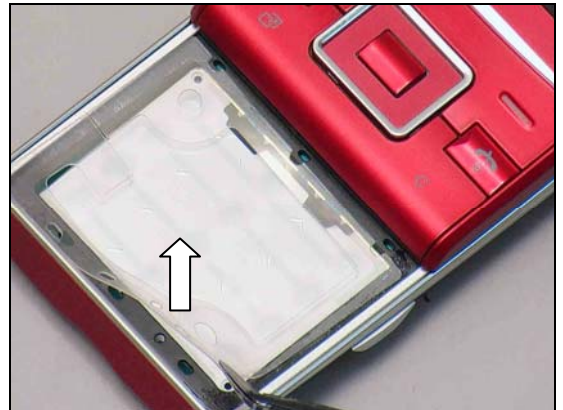


Press along the surface to make the Main Keypad Adhesive with Protect sheet securely attached.



Replacement: Main Keypad Adhesive

Remove the Protect sheet.



Replacement

4.19 Main Keypad

Follow the 3.1 Disassembly instructions!

Carry out the Removal as described below.

Prepare a new Main Keypad.

Carry out the Installation as described below.

Follow the 5.10 Reassembly instructions!

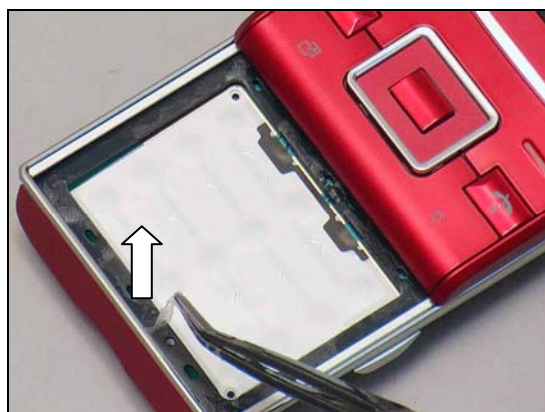
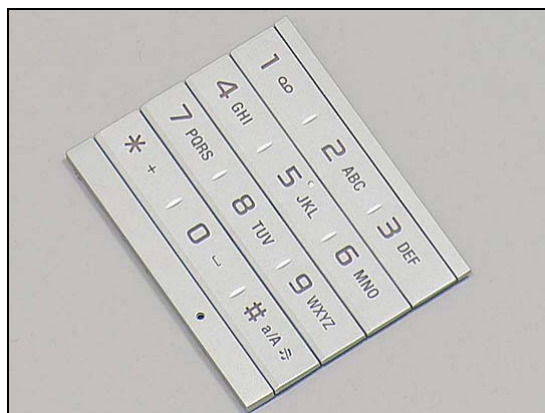
The Main Keypad Adhesive cannot be reused. Prepare a new Main Keypad Adhesive.

REMOVAL

Insert the flex film assembly tool carefully underneath to release the Keypad.

Peel off the Main Keypad.

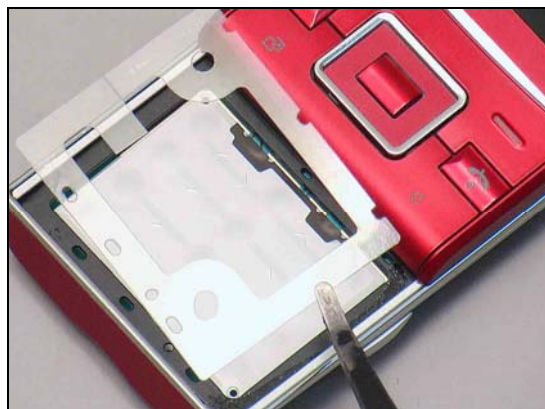
Remove the Main Keypad Adhesive by flex film assembly tool.



Replacement: Main Keypad

INSTALLATION

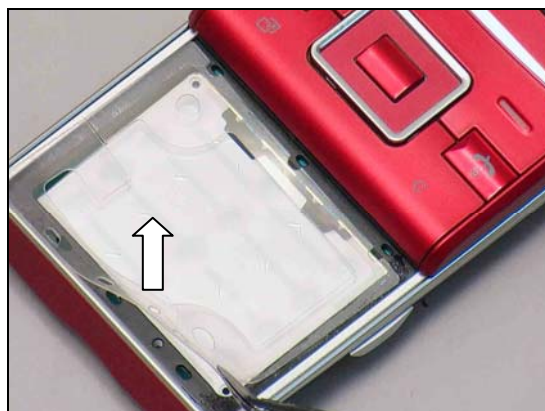
Attach the Main Keypad Adhesive sheet on the Lower Front Cover.



Press along the surface to make the Main Keypad Adhesive with Protect sheet securely attached.



Remove the Protect sheet.



Place the Keypad against the boarder.



Replacement: Main Keypad

Press to make the Main Keypad securely attached.



Replacement

4.20 Receiver

Follow the 4.34, 4.9 and 4.35 Removal instructions!

Carry out the Removal as described below.

Prepare a new Receiver.

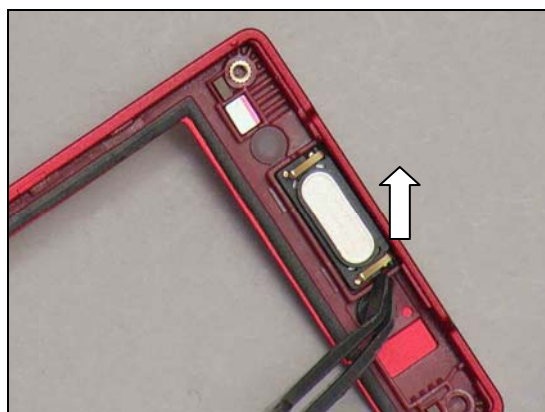
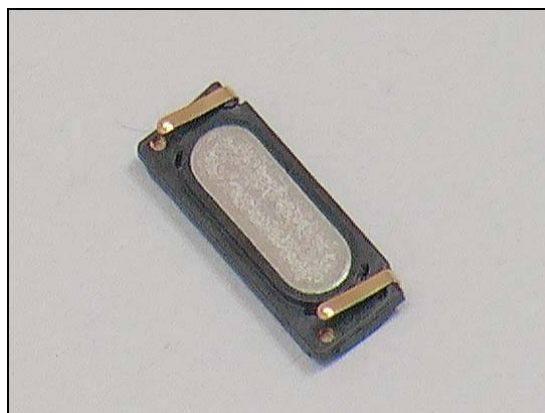
Carry out the Installation as described below.

Follow the 4.35, 4.9 and 4.34 Installation instructions!

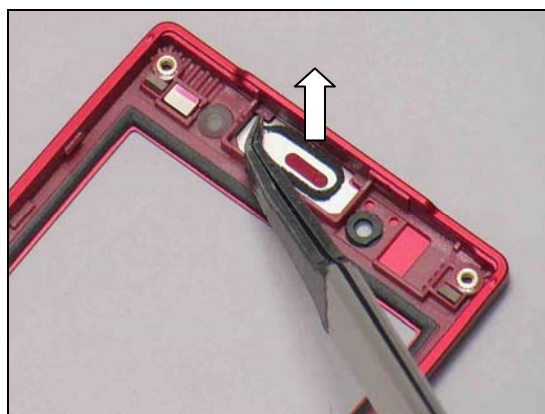
The Sub Keypad Adhesive cannot be reused. Prepare a new Sub Keypad Adhesive.

REMOVAL

Remove the Receiver on the Lower Rear Cover.



Remove the Receiver Gasket.



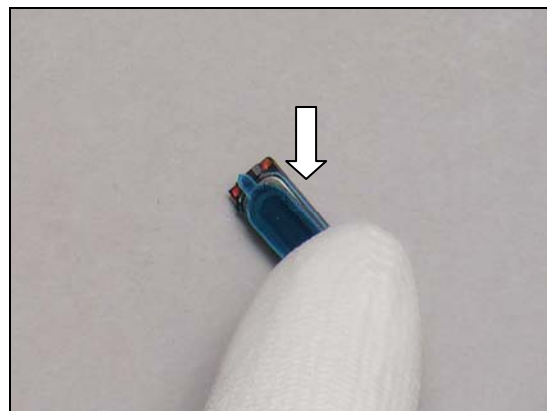
INSTALLATION

Place the Receiver Gasket on the back of the new Receiver.

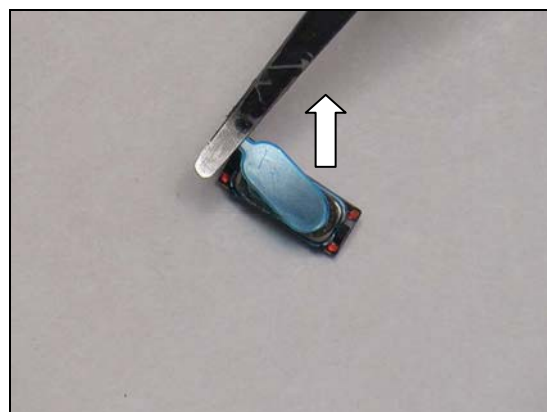


Replacement: Receiver

Press gently until it is securely attached.



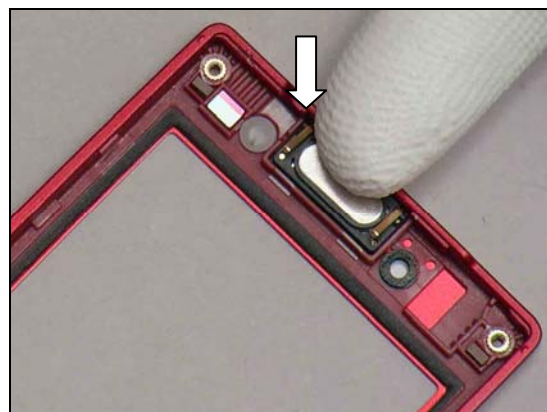
Remove the Protection Film.



Place the Receiver on the Upper Front Cover.



Press to make the Receiver securely attached.



Replacement

4.21 Receiver Gasket

Follow the 4.34, 4.9, 4.35 and 4.20 Removal instructions!

Carry out the Removal as described below.

Prepare a new Receiver.

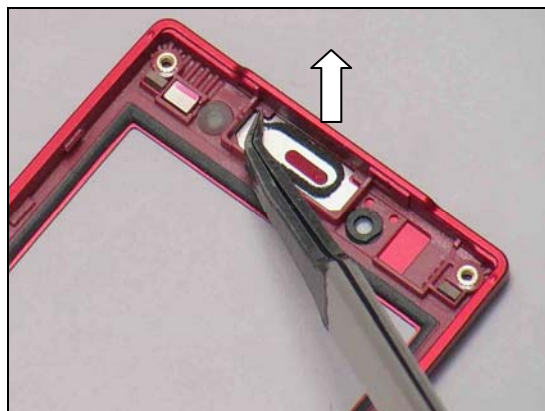
Carry out the Installation as described below.

Follow the 4.20, 4.35, 4.9 and 4.34 Installation instructions!

The Sub Keypad Adhesive cannot be reused. Prepare a new Sub Keypad Adhesive.

REMOVAL

Remove the Receiver Gasket



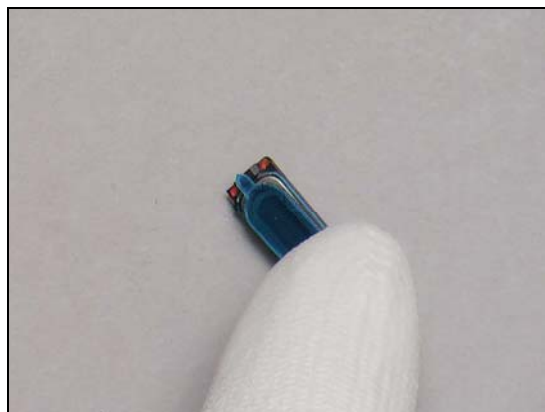
INSTALLATION

Place the Receiver Gasket on the back of the Receiver.



Press gently until it is securely attached.

Note: Remove the Protection Film before use.



Replacement

4.22 Shield Can Lid BB

Follow the 3.1 – 3.3 Disassembly instructions!

Carry out the Removal as described below.

Prepare a new Shield Can Lid BB

Carry out the Installation as described below.

Follow the 5.8 – 5.10 Reassembly instructions!

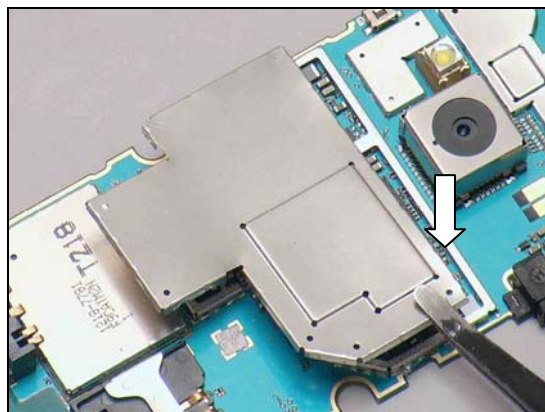
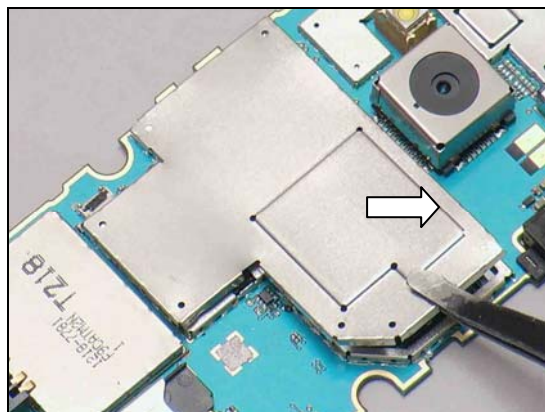
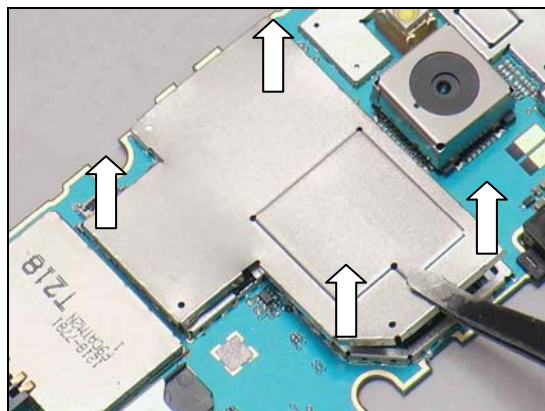
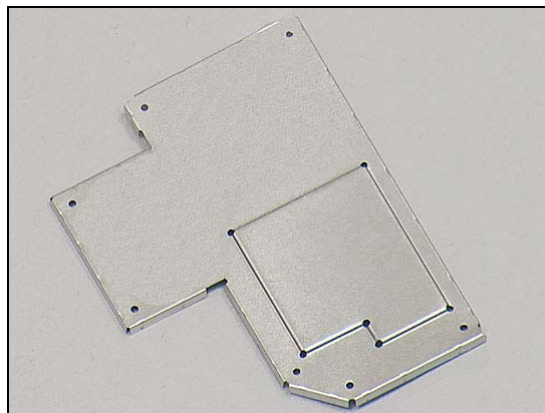
REMOVAL

Insert the flex film assembly tool into the corners of the Shield Can Lid BB and pull upwards to release it.

Remove the Shield Can Lid BB.

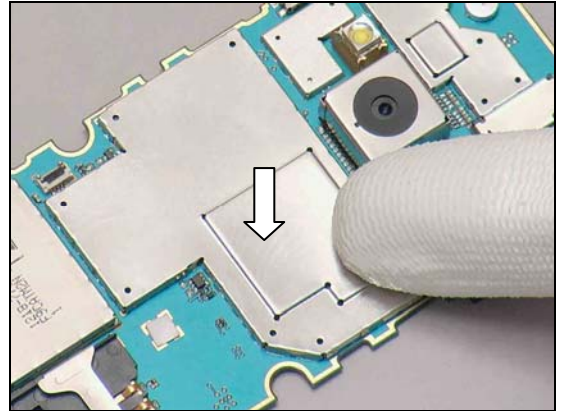
INSTALLATION

Place the Shield Can Lid BB on top of the Shield Fence.



Replacement: Shield Can Lid BB

Press gently until it is securely attached.



Replacement

4.23 Shield Can Lid WIFI&BT

Follow the 3.1 – 3.3 Disassembly instructions!

Carry out the Removal as described below.

Prepare a new Shield Can Lid WIFI&BT.

Carry out the Installation as described below.

Follow the 5.8 – 5.10 Reassembly instructions!

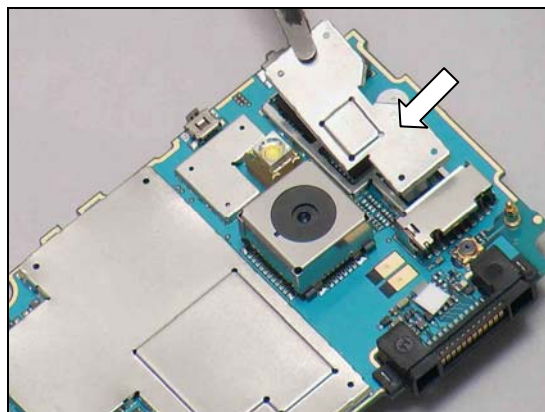
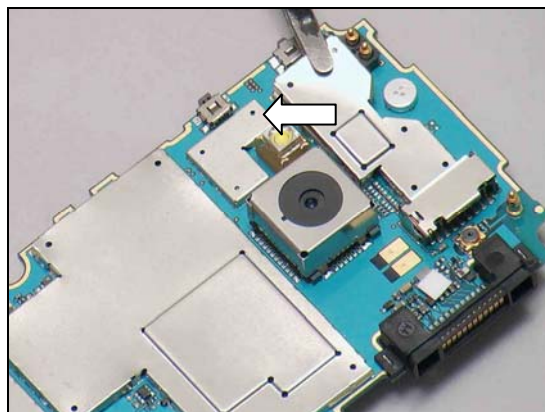
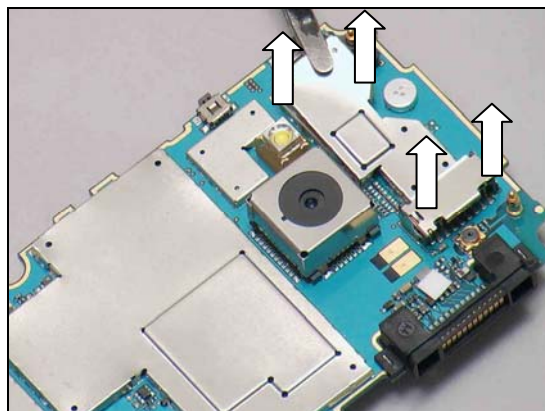
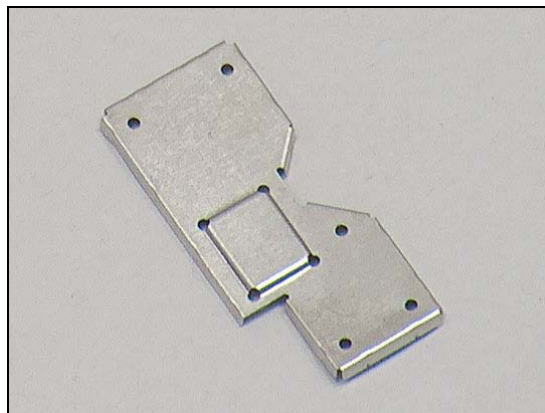
REMOVAL

Insert the flex film assembly tool into the corners of the Shield Can Lid WIFI & BT and pull upwards to release it.

Remove the Shield Can Lid WIFI&BT.

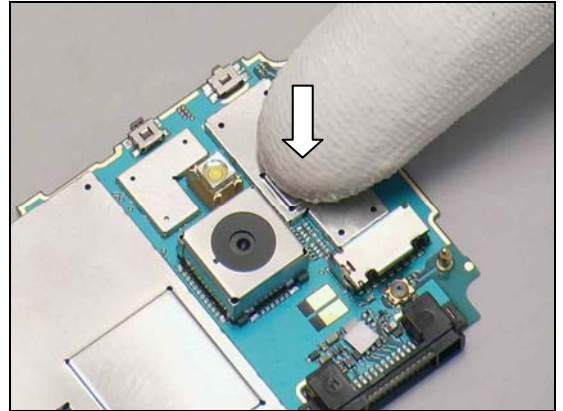
INSTALLATION

Place the new Shield Can Lid WIFI & BT on top of the Shield Fence.



Replacement: Shield Can Lid WIFI&BT

Press gently until it is securely attached.



Replacement

4.24 SIM Connector Foil

Follow the 3.1 Disassembly instructions!

Carry out the Removal as described below.

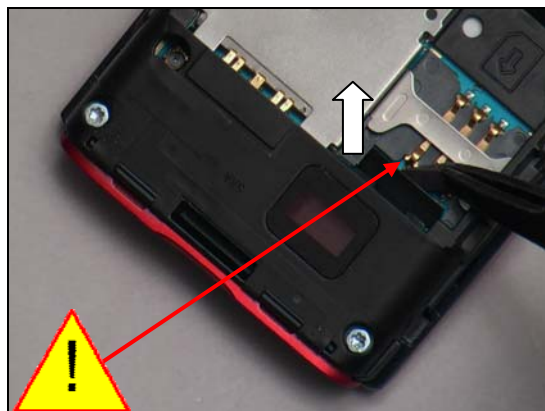
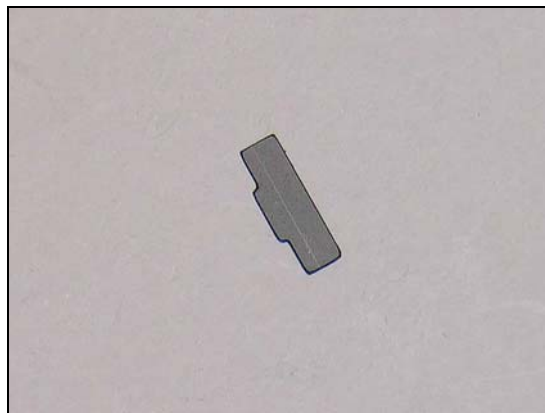
Prepare a new SIM Connector Foil.

Carry out the Installation as described below.

Follow the 5.10 Reassembly instructions!

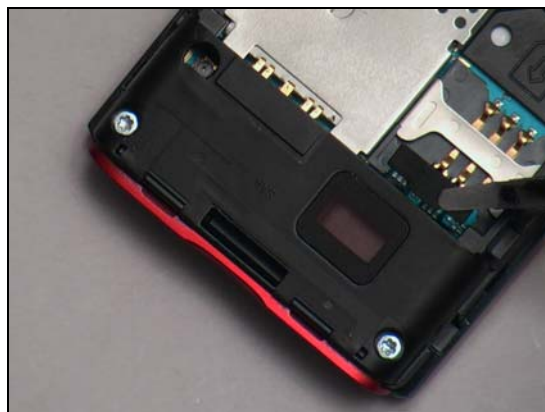
REMOVAL

Insert the flex film assembly tool underneath the SIM Connector Foil and release it.

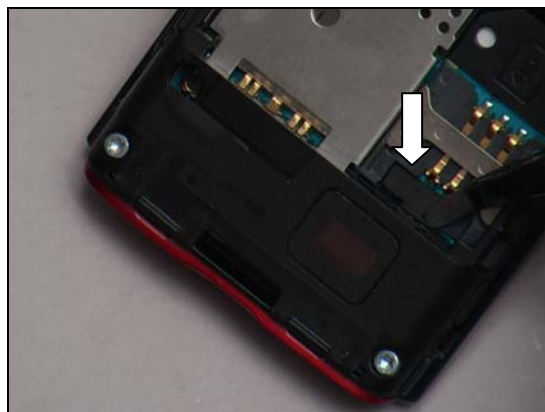


INSTALLATION

Place the SIM Connector Foil as shown.



Press gently until it is securely attached.



Replacement

4.25 Speaker

Follow the 3.1 – 3.2 Disassembly instructions!

Carry out the Removal as described below.

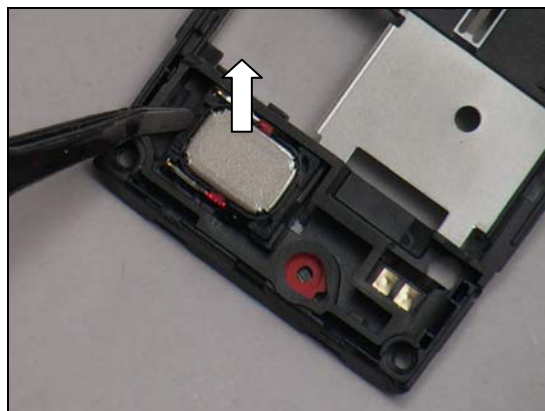
Prepare a new Speaker.

Carry out the Installation as described below.

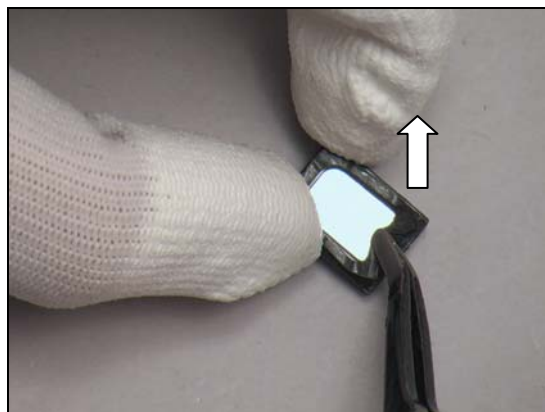
Follow the 5.9 – 5.10 Reassembly instructions!

REMOVAL

Release the Speaker from the Lower Rear Cover with a flex film assembly tool.

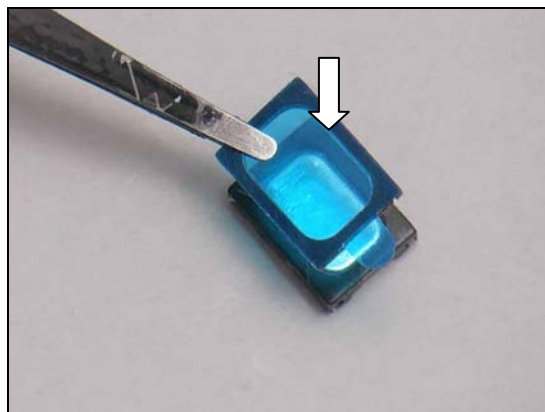


Peel off the Speaker Gasket From Lower Rear Cover.



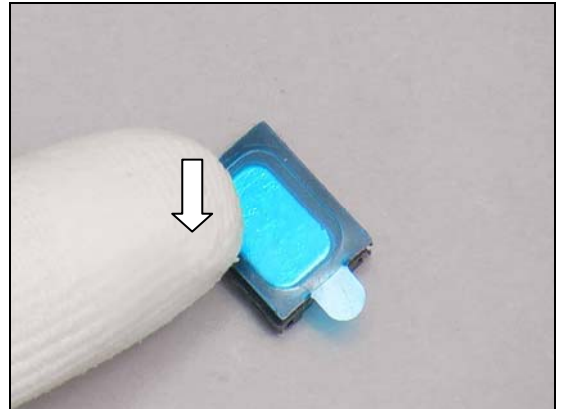
INSTALLATION

Attach the Speaker Gasket on the back of the Speaker.

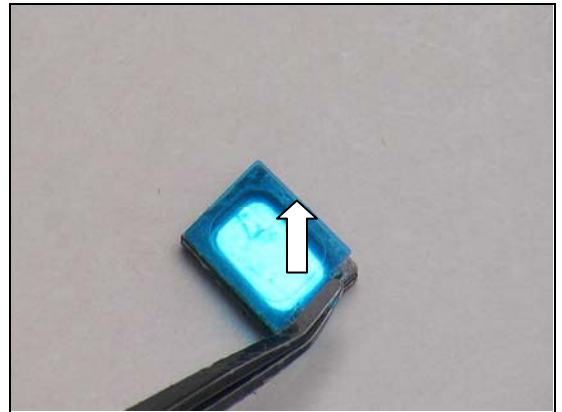


Replacement: Speaker

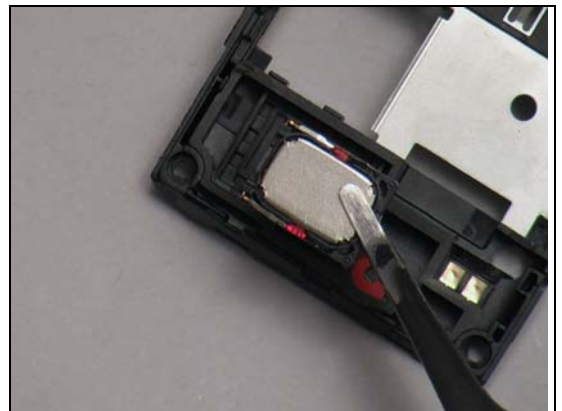
Press to make the Speaker Gasket securely attached.



Remove the Protection Film.



Place the Speaker on the Lower Rear Cover.



Replacement

4.26 Speaker Gasket

Follow the 3.1 – 3.2 Disassembly instructions!

Follow the 4.25 Removal instructions!

Carry out the Removal as described below.

Prepare a new Speaker Gasket.

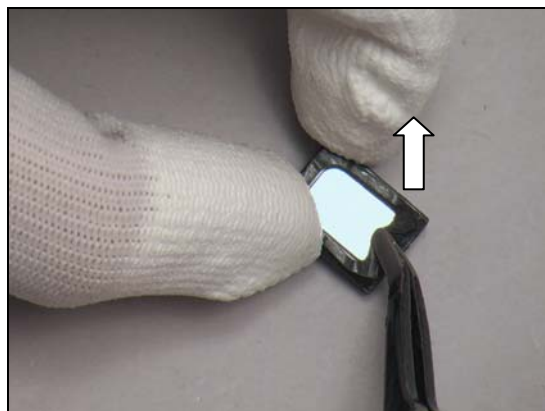
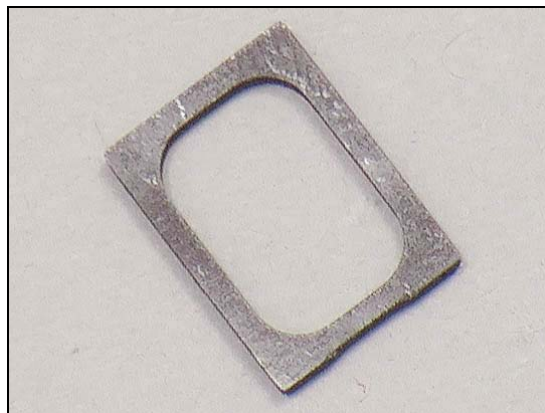
Carry out the Installation as described below.

Follow the 4.25 Installation instructions!

Follow the 5.9 – 5.10 Reassembly instructions!

REMOVAL

Remove the Speaker Gasket From Lower Rear Cover.



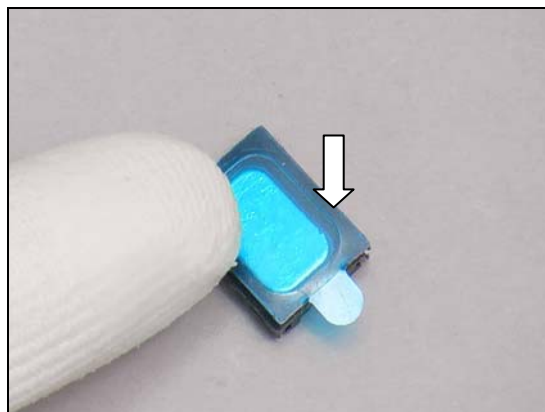
INSTALLATION

Attach the Speaker Gasket on the back of the Speaker.



Press to make the Speaker Gasket securely attached.

Note: Remove the Protection Film before use.



Replacement

4.27 Sub Camera

Follow the 4.34, 4.9, 4.35 and 4.28 Removal instructions!

Carry out the Removal as described below.

Prepare a new Sub Camera.

Carry out the Installation as described below.

Follow the 4.28, 4.35, 4.9 and 4.34 Installation instructions!

The Sub Keypad Adhesive cannot be reused. Prepare a new Sub Keypad Adhesive.

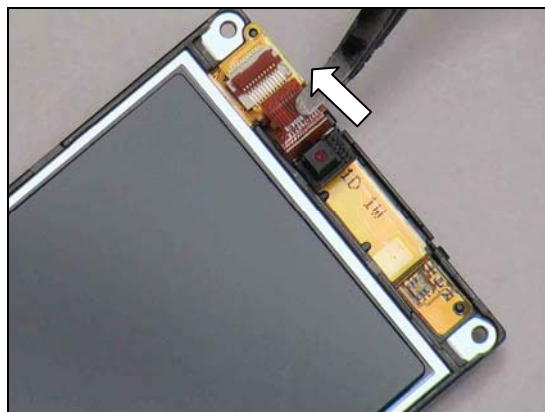
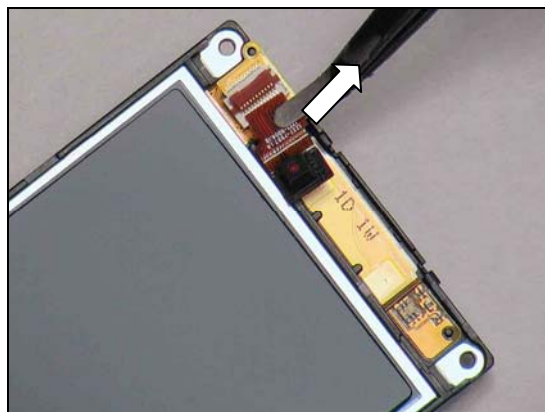
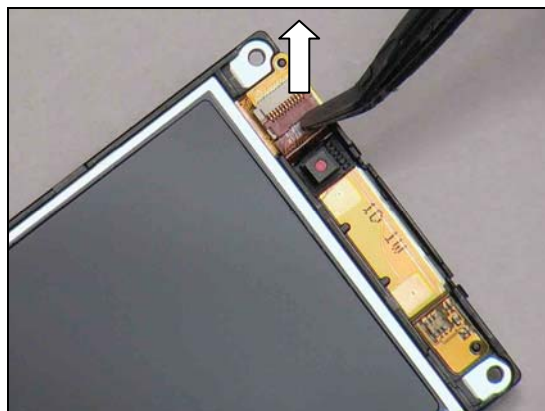
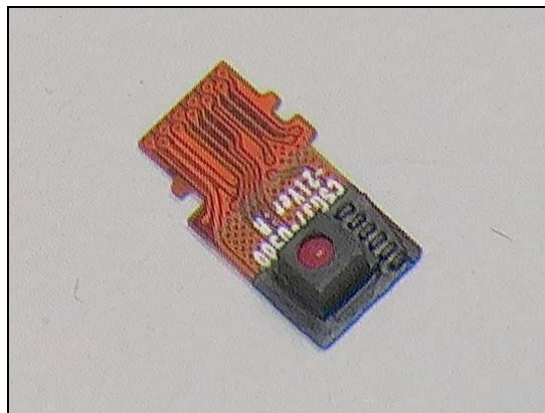
REMOVAL

Open the locker of the ZIP connector by the flex film assembly tool.

Remove the Sub Camera.

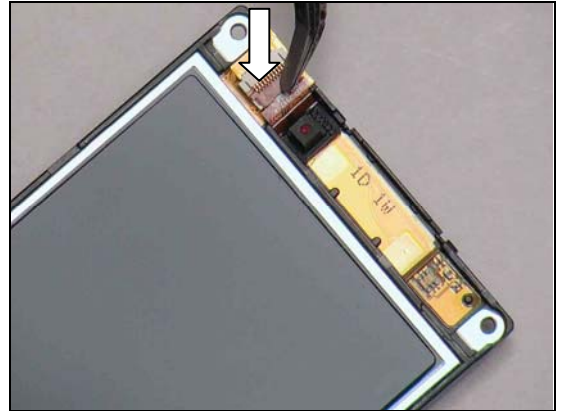
INSTALLATION

Place the Sub Camera on the Main FPC and connect the ZIF connector.



Replacement: Sub Camera

Close the Locker.



Replacement

4.28 Sub Camera Frame

Follow the 4.34, 4.9 and 4.35 Removal instructions!

Carry out the Removal as described below.

Prepare a new Sub Camera Frame.

Carry out the Installation as described below.

Follow the 4.35, 4.9 and 4.34 Installation instructions!

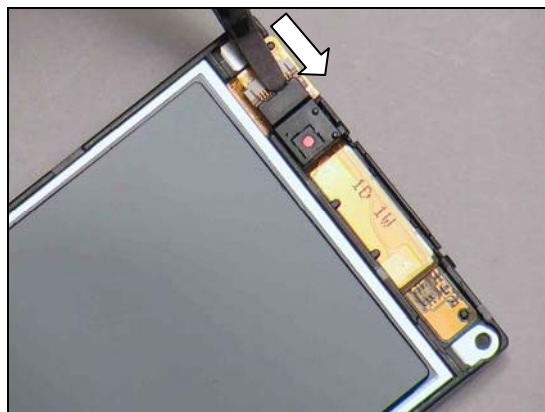
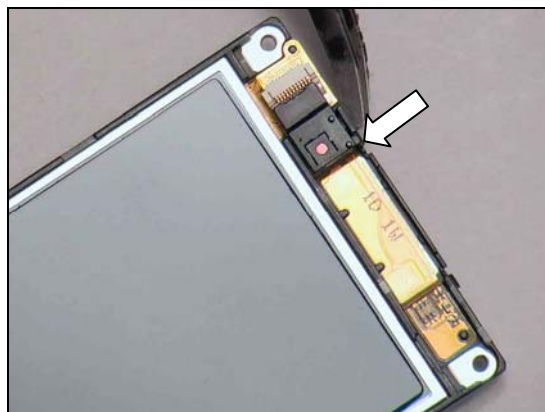
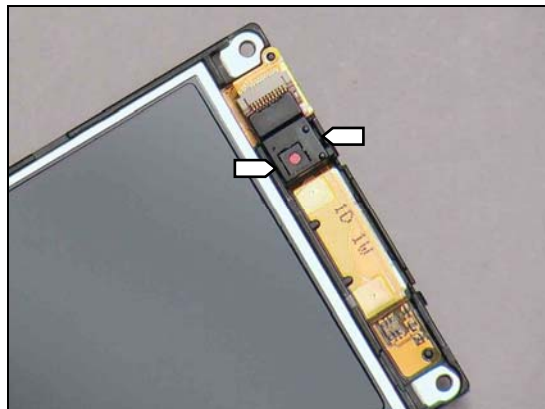
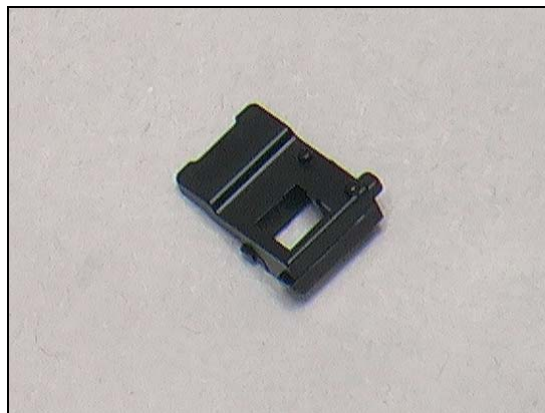
The Sub Keypad Adhesive cannot be reused. Prepare a new Sub Keypad Adhesive.

REMOVAL

There are two hooks to secure the Sub Camera Frame.

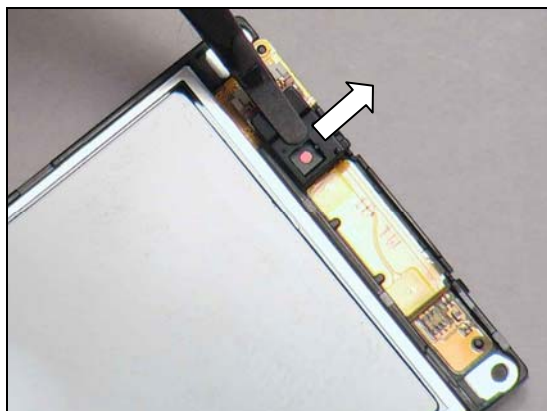
Insert the flex film assembly tool into right side to release the hook.

Insert the flex film assembly underneath to release the Sub Camera Frame.



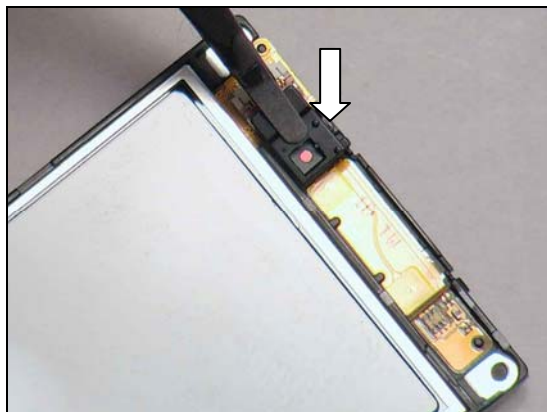
Replacement: Sub Camera Frame

Remove the Sub Camera Frame by flex film assembly Tool.

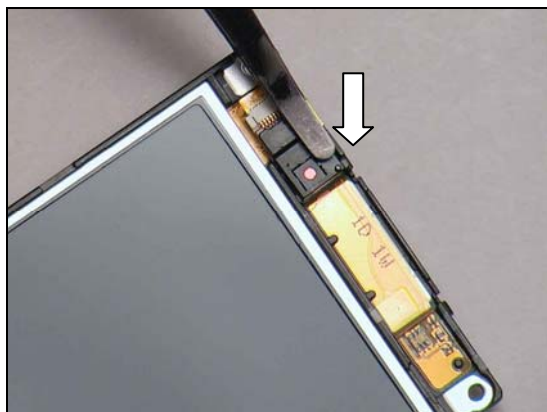


INSTALLATION

Place the Sub Camera Frame on the top of the Sub Camera.



Press gently until it is securely attached.



Replacement

4.29 Sub Keyboard

Follow 4.34, 4.9 and 4.35 Removal instructions!

Carry out the Removal as described below.

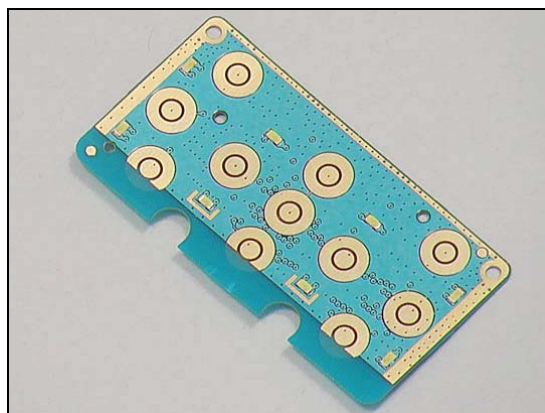
Prepare a new Sub Keyboard.

Follow 4.30, 4.31 and 4.32 Installation instructions!

Carry out the Installation as described below.

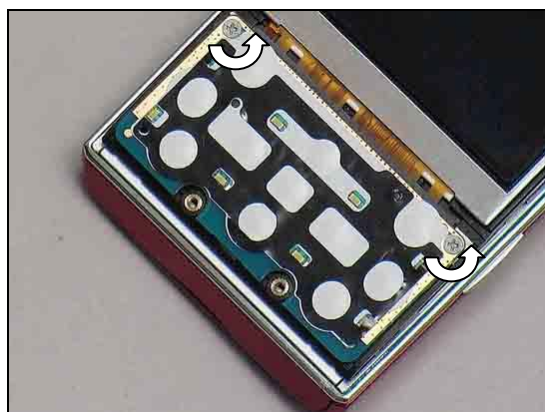
Follow 4.35 4.9 and 4.34 Installation instructions!

The Sub Keypad Adhesive cannot be reused. Prepare a new Sub Keypad Adhesive.

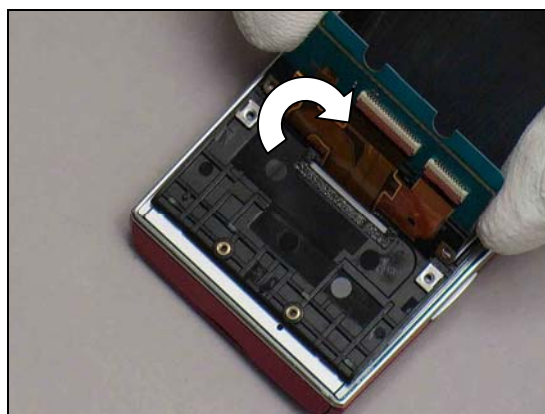


REMOVAL

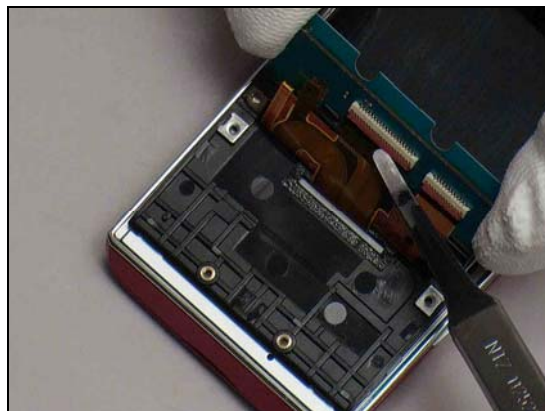
Remove the two screws with a torque screwdriver with JCIS No 0.



Lift the sub keyboard up and turn it approximately 90°.

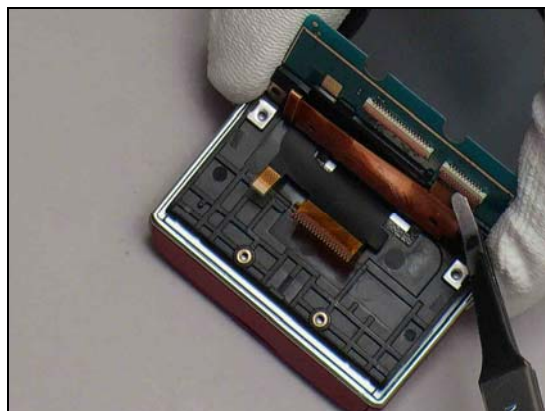


Unlock the ZIF connector and release the Main FPC by using a flex film assembly tool.

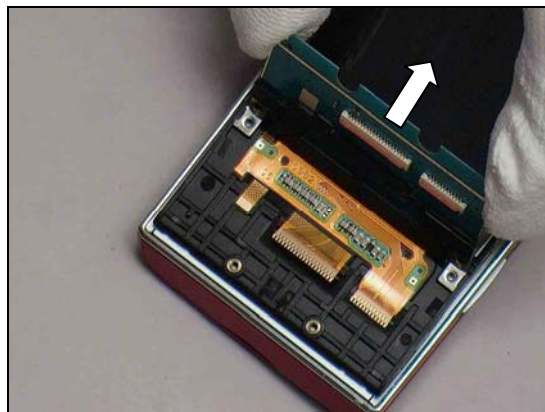


Replacement: Sub Keyboard

Unlock the ZIF connector and release the Main Display by using a flex film assembly tool.

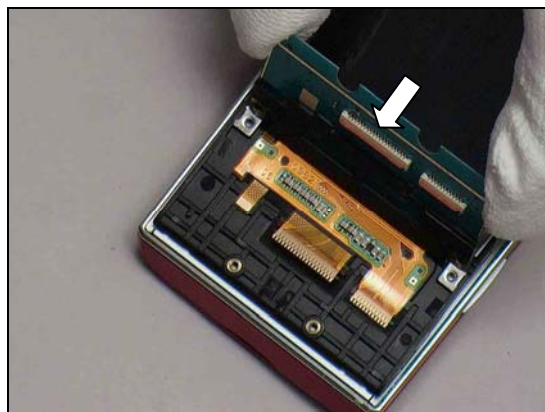


Remove the Sub Keyboard.

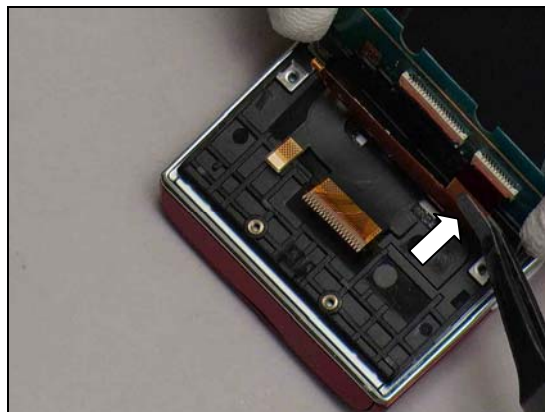


INSTALLATION

Put the Sub Keyboard in a vertical position as shown.

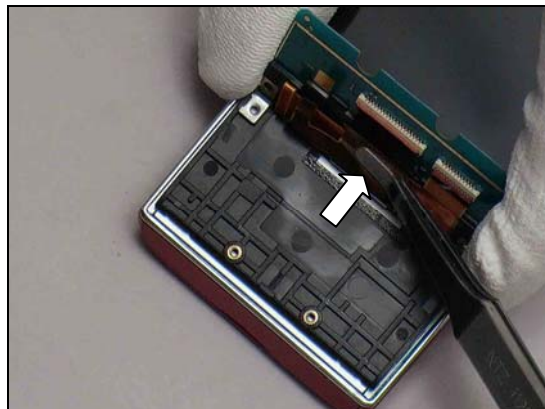


Insert the Display FPC into the ZIF connector with a flex film assembly tool and lock it.

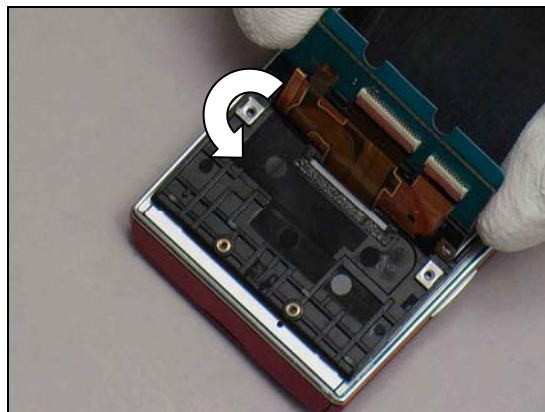


Replacement: Sub Keyboard

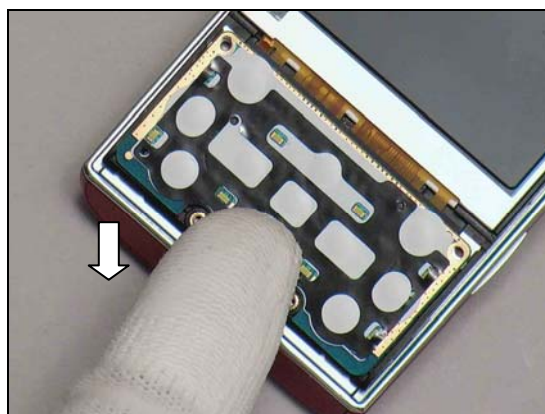
Insert the Main FPC into the ZIF connector with flex film assembly tool and lock it.



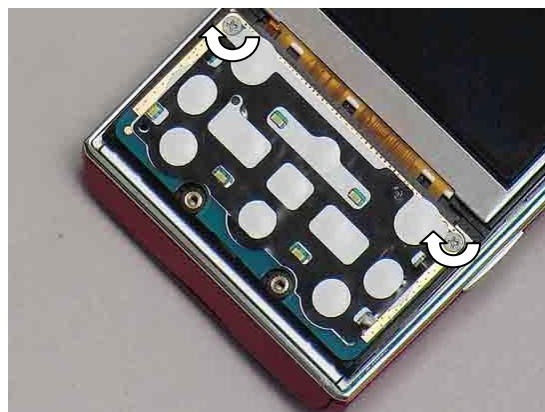
Turn the Sub Keyboard Assy back to a horizontal position.



Press to snap the hooks.



Tighten the two screws with a torque screwdriver with JCIS No 0.to a torque of 11 Ncm.



Replacement

4.30 Sub Keyboard Domesheet

Follow 4.34, 4.9 and 4.35 Removal instructions!

Carry out the Removal as described below.

Prepare a new Sub Keyboard Domesheet.

Carry out the Installation as described below.

Follow 4.31, 4.35, 4.9 and 4.34 Installation instructions!

The Sub Keypad Adhesive cannot be reused. Prepare a new Sub Keypad Adhesive.

REMOVAL

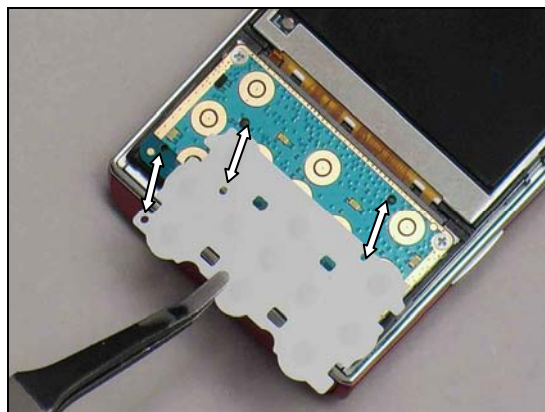
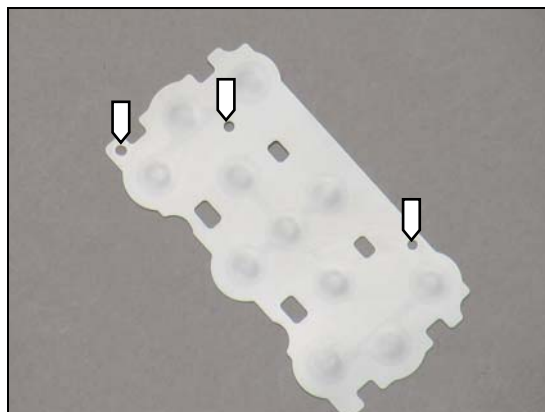
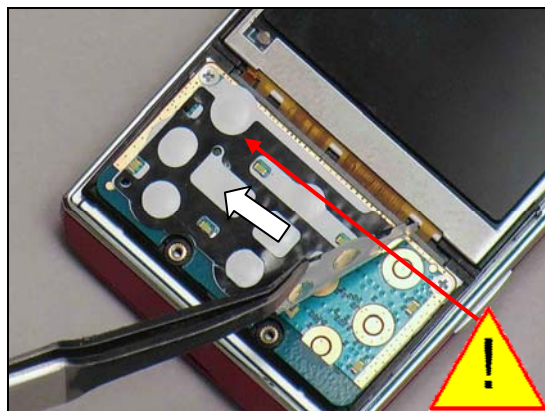
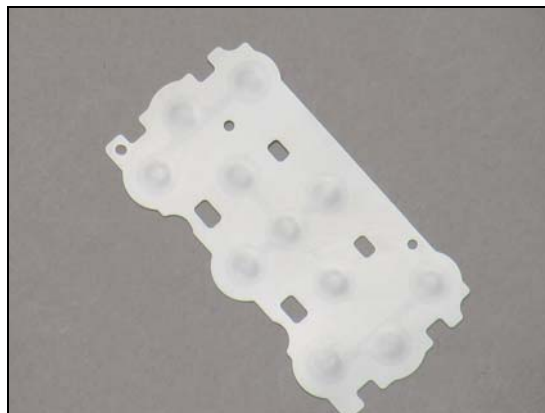
Peel off the Dome Sheet with the Sub Keyboard Film carefully from the Sub Keyboard PCBA.

Scrap! Not to be reused!

INSTALLATION

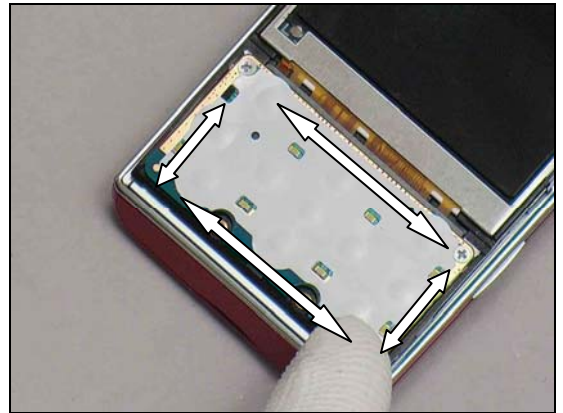
There are three guiding holes on the Dome Sheet for the alignment.

Place the new Dome Sheet onto the Sub Keyboard.



Replacement: Sub Keyboard Domesheet

Press around with fingers until it is securely attached.



Replacement

4.31 Sub Keyboard Film

Follow 4.34, 4.9 and 4.35 Removal instructions!

Carry out the Removal as described below.

Prepare a new Sub Keyboard Film.

Carry out the Installation as described below.

Follow 4.35, 4.9 and 4.34 Installation instructions!

The Sub Keypad Adhesive cannot be reused. Prepare a new Sub Keypad Adhesive.

REMOVAL

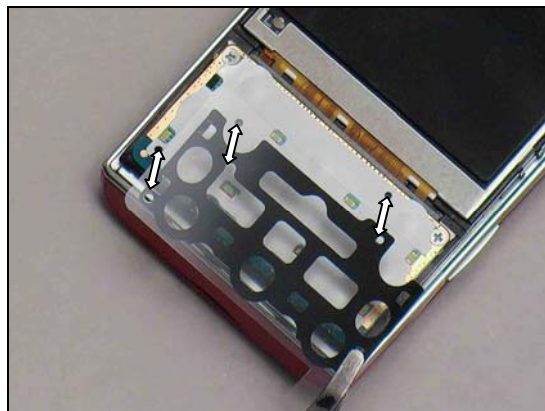
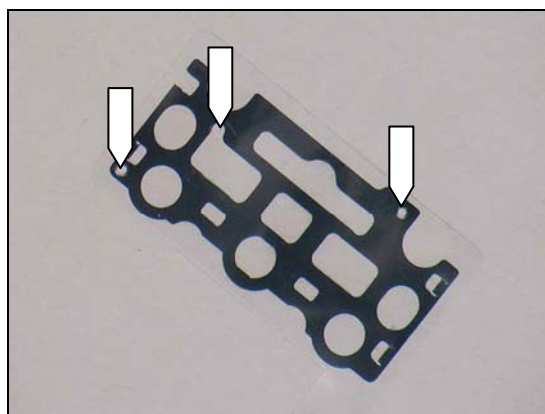
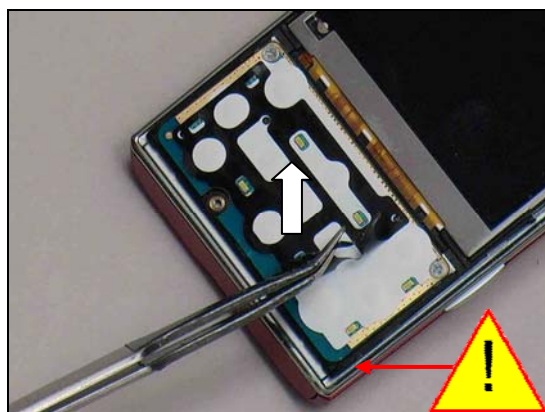
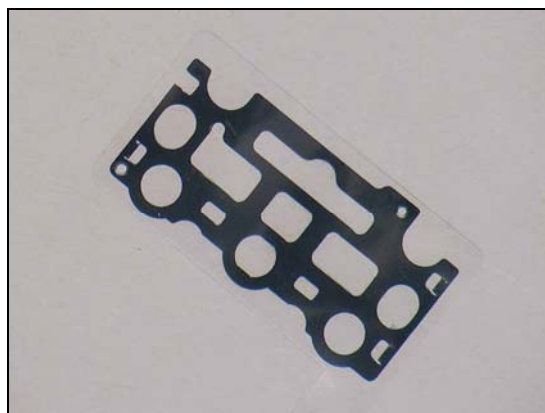
Peel off the Sub Keyboard Film carefully from the Sub Keyboard Domesheet.

Scrap! Not to be reused!

INSTALLATION

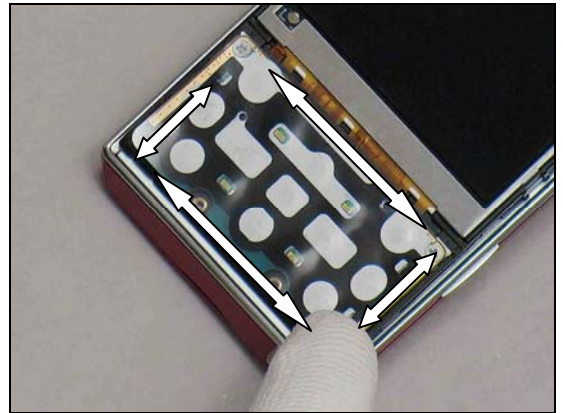
There are three guiding holes on the Sub Keyboard Film for the alignment.

Place the Sub Keyboard Film onto the Sub Keyboard Dome sheet.

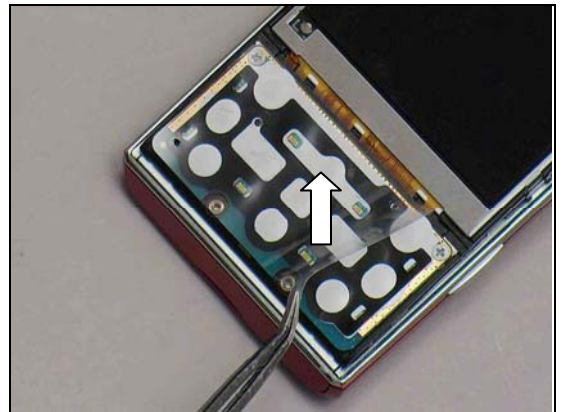


Replacement: Sub Keyboard Film

Press gently until it is securely attached.



Remove the Protection Film.



Replacement

4.32 Sub Keyboard Frame

Follow 4.34, 4.9, 4.35 and 4.29 Removal instructions!

Carry out the Removal as described below.

Prepare a new Sub Keyboard Frame.

Carry out the Installation as described below.

Follow 4.29, 4.35, 4.9 and 4.34 Installation instructions!

The Sub Keypad Adhesive cannot be reused. Prepare a new Sub Keypad Adhesive.

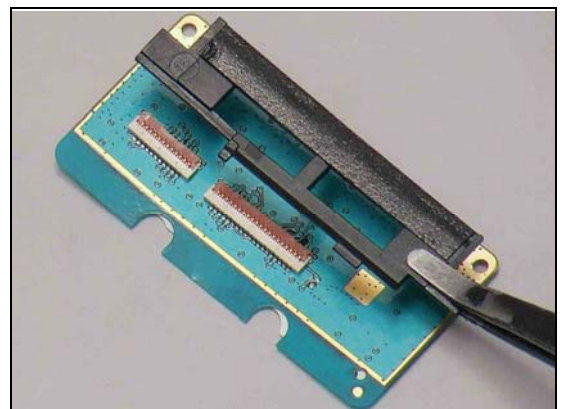
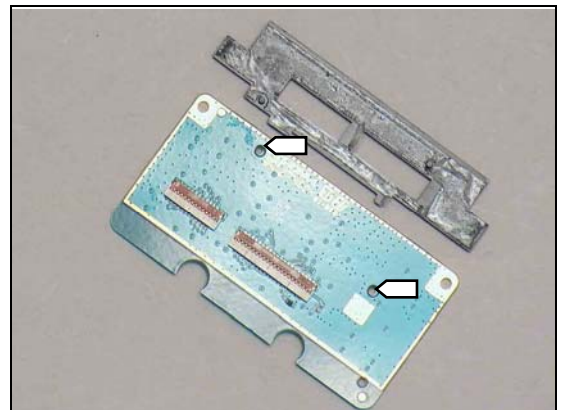
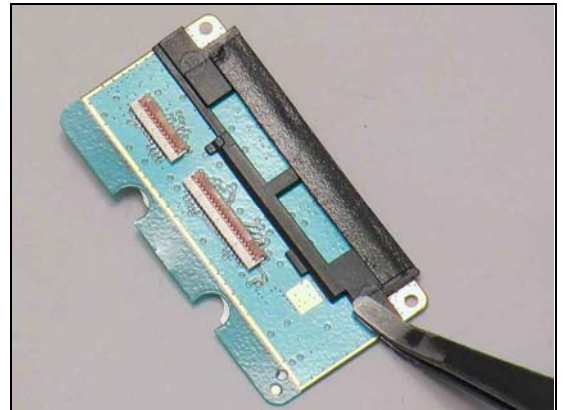
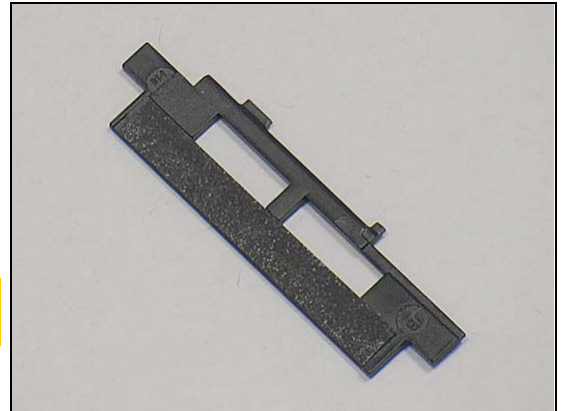
REMOVAL

Insert the flex film assembly tool underneath the Sub Keyboard Frame and Release.

INSTALLATION

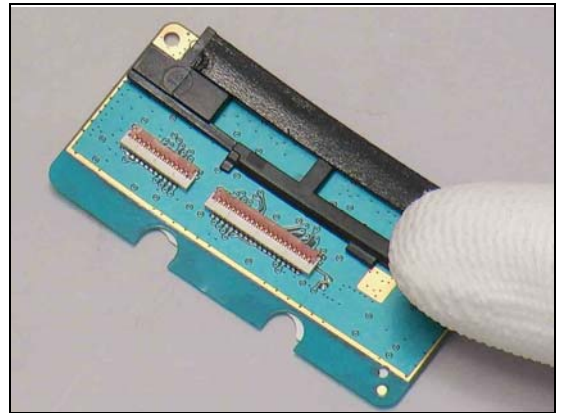
There are two guiding holes located as shown.

Attach the Sub Keyboard Frame to the Sub Keyboard.

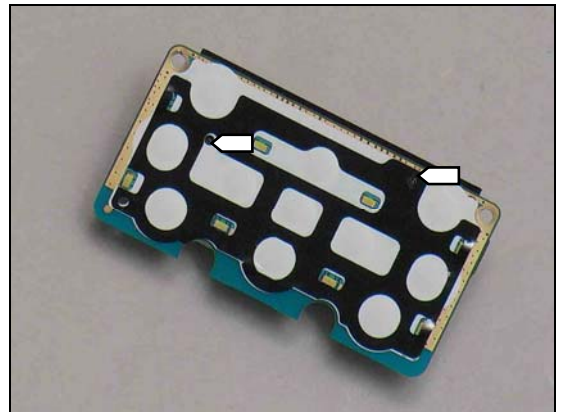


Replacement: Sub Keyboard Frame

Press gently until it is securely attached.



Check guide pins from other side.



Replacement

4.33 Sub Keypad Adhesive

Follow the 4.34 Removal instructions!

Carry out the Removal as described below.

Prepare a new Sub Keypad Adhesive.

Carry out the Installation as described below.

Follow the 4.34 Installation instructions!

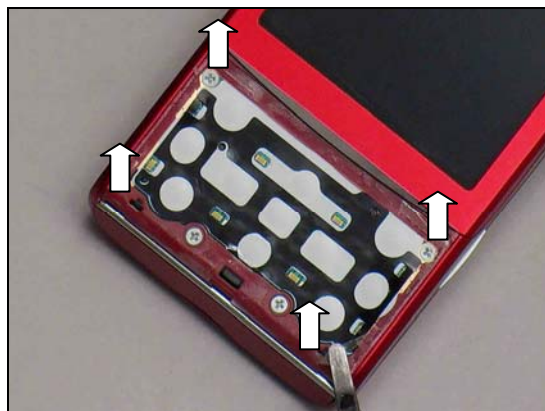
REMOVAL

Remove the Sub Keypad Adhesive by flex film assembly tool.

INSTALLATION

Attach the Sub Keypad Adhesive sheet on the Upper Front Cover

Press along the surface to make the Sub Keypad Adhesive securely attached.



Replacement: Sub Keypad Adhesive

Remove the Protect sheet.



Replacement

4.34 Sub Keypad

Carry out the Removal as described below.

Follow the 4.33 Removal instructions!

Prepare a new Sub Keypad.

Follow the 4.33 Installation instructions!

Carry out the Installation as described below.

The Sub Keypad Adhesive cannot be reused. Prepare a new Sub Keypad Adhesive.

REMOVAL

There are nine hooks securing the Sub Keypad located around as shown.

Insert the Front Opening Tool underneath the sub keypad as shown in picture

Pull the Sub Keypad from lower to front and remove it.

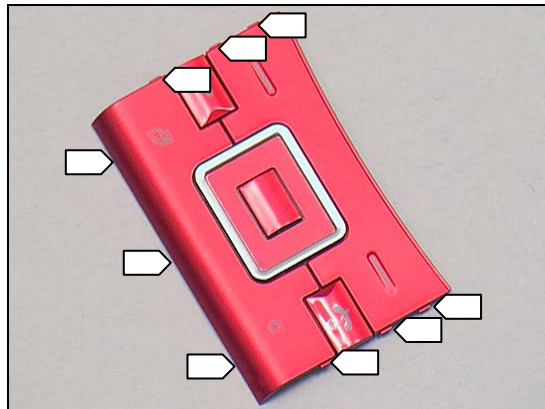
Scrap it if it's damaged!



Replacement: Sub Keypad

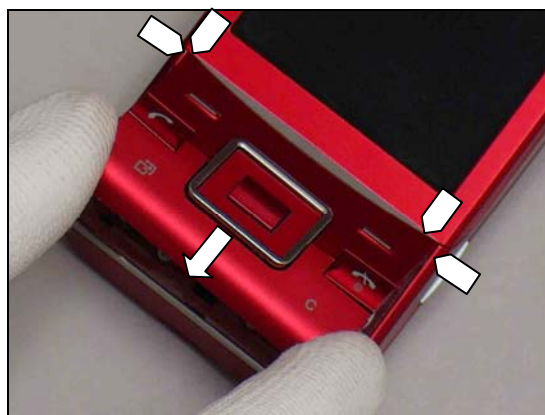
INSTALLATION

There are nine hooks securing the Sub Keypad located around as shown.



Place the sub keypad on the Front Cover.

Make sure new Sub Keypad Adhesive are replaced firstly!



Press around to snap the nine hooks.



Replacement

4.35 Upper Front Cover

Follow 4.34 and 4.9 Removal instructions!

Carry out the Removal as described below.

Follow 4.20 Removal instructions!

Prepare a new Upper Front Cover.

Follow 4.20 Installation instructions!

Carry out the Installation as described below.

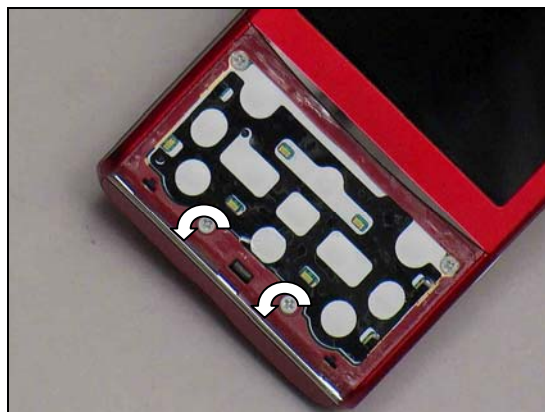
Follow 4.9 and 4.34 Installation instructions!

The Sub Keypad Adhesive cannot be reused. Prepare a new Sub Keypad Adhesive.



REMOVAL

Remove the two screws with a Torque Screwdriver with JCIS No 0.



Remove the two screws by the torque screwdriver with JCIS No 0.



There are eight securing hooks as shown by the arrows.



Replacement: Upper Front Cover

Insert the Guitar Pick into side of the Upper front Cover



Push the Guitar Pick along gently to release the hooks of this side.



Do the same on the opposite side.



Lift to remove the Upper Rear Cover.



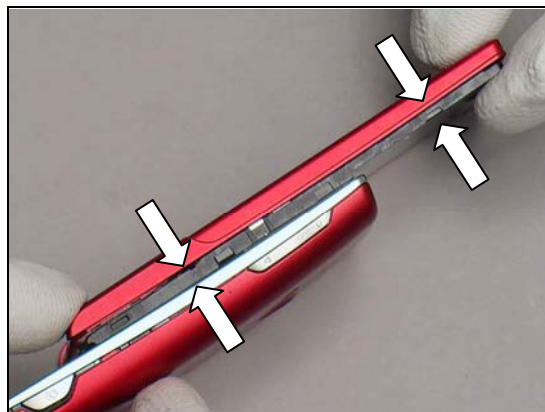
Replacement: Upper Front Cover

INSTALLATION

Place the Front Cover on top of the Slide Unit.



Press like this to snap this side of the Front Cover to the Slide Unit.



Do the same on the opposite side.



The Upper Front Cover should be installed like this.



Replacement: Upper Front Cover

Tighten the two screws M1.4X2.0 with a screwdriver with JCIS No 0 to a torque of 11 Ncm.



Tighten the two screws M1.4X2.0 with a screwdriver with JCIS No 0 to a torque of 11 Ncm.



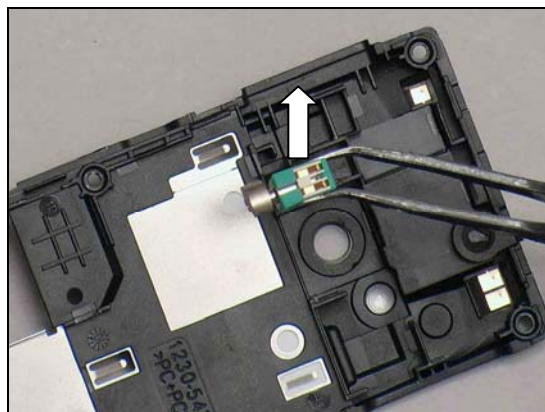
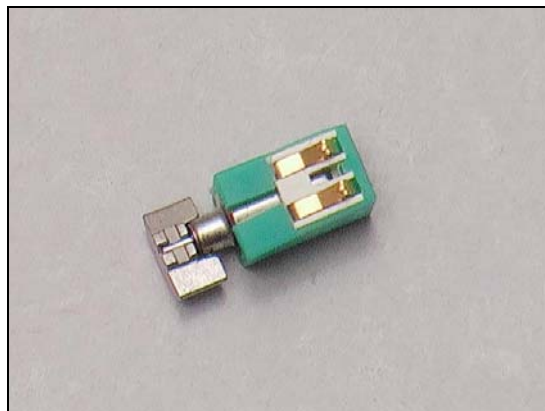
Replacement

4.36 Vibrator

Follow the 3.1 – 3.2 Disassembly instructions!
 Carry out the Removal as described below.
 Prepare a new Vibrator.
 Carry out the Installation as described below.
Follow the 5.9 – 5.10 Reassembly instructions!!

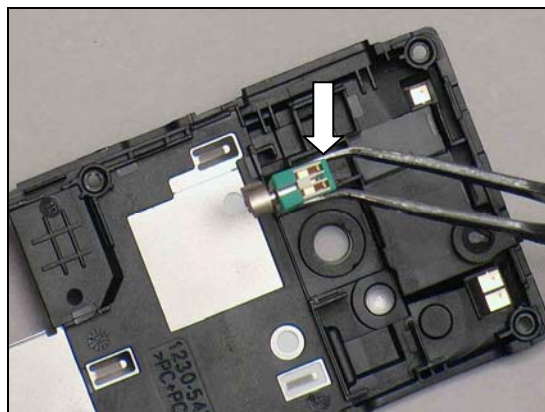
REMOVAL

Remove the Vibrator by Flex Film Assembly tool.

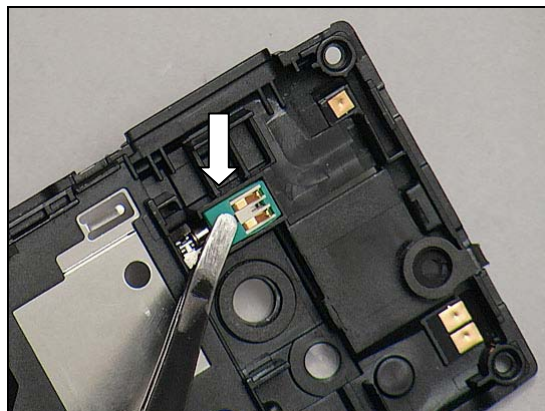


INSTALLATION

Place the Vibrator on Lower Rear Cover.



Press to make the Vibrator securely attached.



Replacement

4.37 Volume Key

Follow the 3.1 – 3.3 Disassembly instructions!

Carry out the Removal as described below.

Prepare a new Volume Key.

Carry out the Installation as described below.

Follow the 5.8 – 5.10 Reassembly instructions!

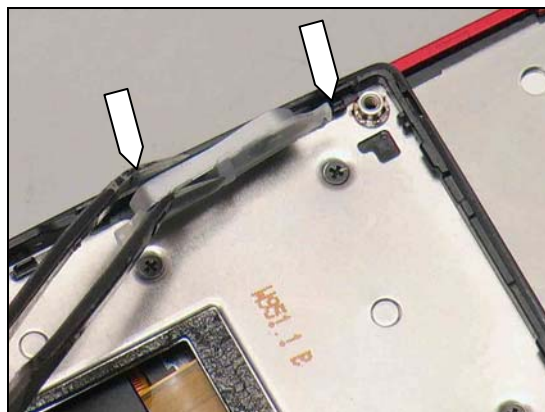
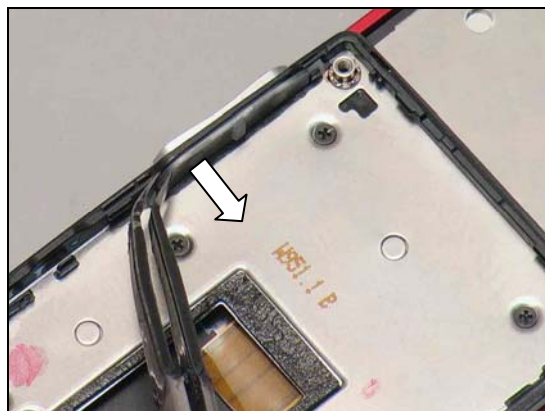
REMOVAL

Remove the Volume Key by flex film assembly tool.

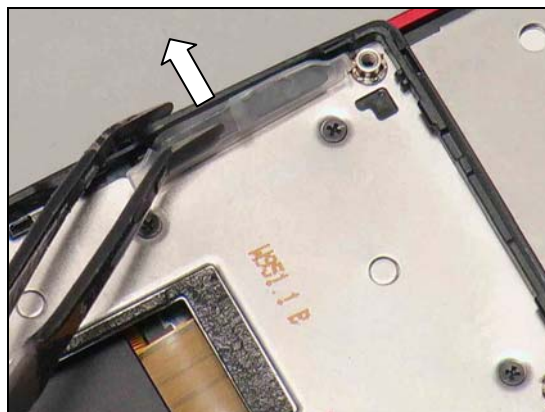


INSTALLATION

Place the Volume Key onto the Lower Front Cover.



Push the Volume Key inside its corresponding pockets by the flex film assembly tool.



Replacement

4.38 Board Swap—Replace Swap Board

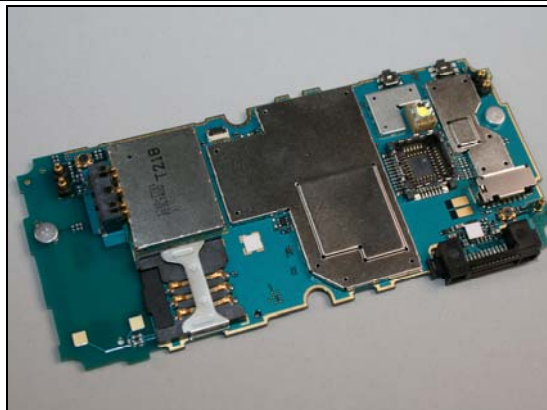
Follow the 3.1– 3.3 Disassembly instructions!

Follow the 4.6, 4.15 Removal instructions!

Prepare a new swap board.

Follow the 4.6, 4.15 Installation instructions!

Follow the 5.8 - 5.10 Reassembly instructions!



4.39 Board Swap – Change Label

Change Label

Follow the instructions in the Generic Repair Manual –
Build swap for change of label.

4.40 Board Swap – Customize Software

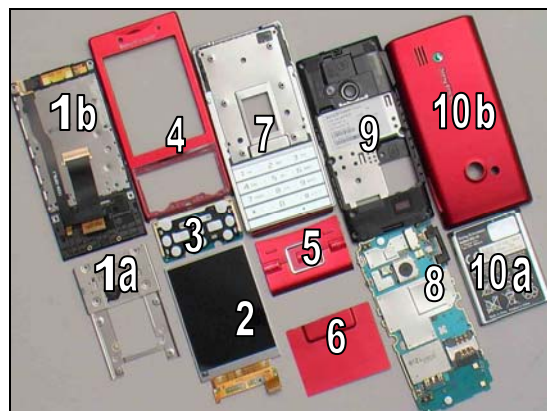
Customization of software

Follow the instructions in the Generic Repair Manual –
Build swap for customization of the software

5 Reassembly

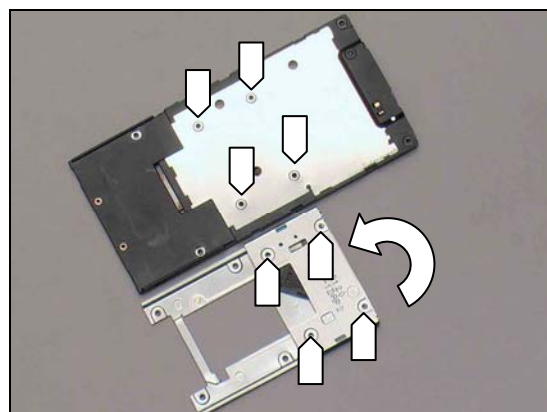
The reassembly is done in the following order:

1. Hinge Slide (a) & Upper Rear Cover Assy (b)
2. Display
3. Sub Keyboard Assy
4. Upper Front Cover Assy
5. Sub Keypad
6. Deco Sheet
7. Lower Front Cover Assy
8. Main PCBA
9. Lower Rear Cover Frame Assy
10. Battery (a) & Battery Cover (b)

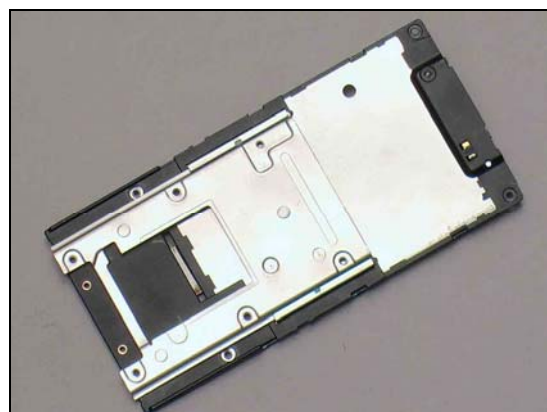


5.1 Hinge Slide & Upper Rear Cover Assy

Turn over the Hinge Slider aligning the four screw holes on it to their respective screw holes on the Upper Rear Cover.

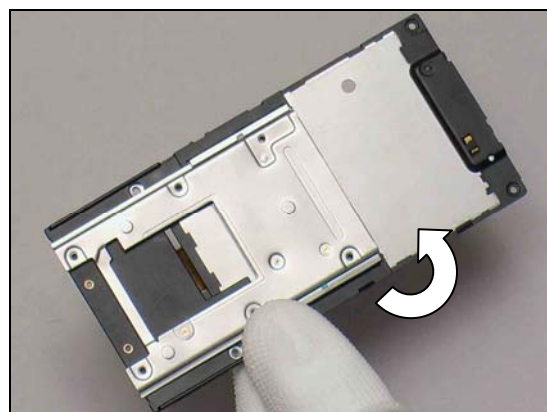


Place the Hinge Slide onto the Upper Rear Cover Assy.



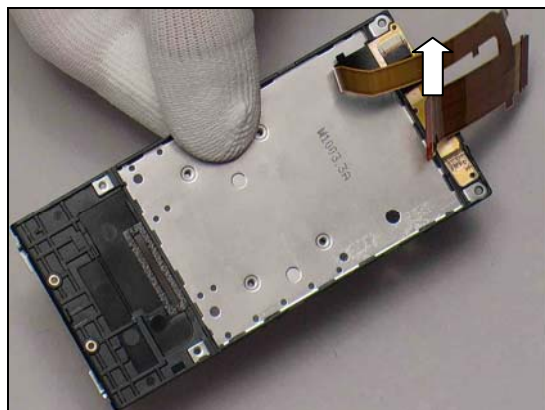
Hold the unit and turn it over

Be careful not to lose the alignment between the Hinge Slide and the Rear Cover Assy in this operation.

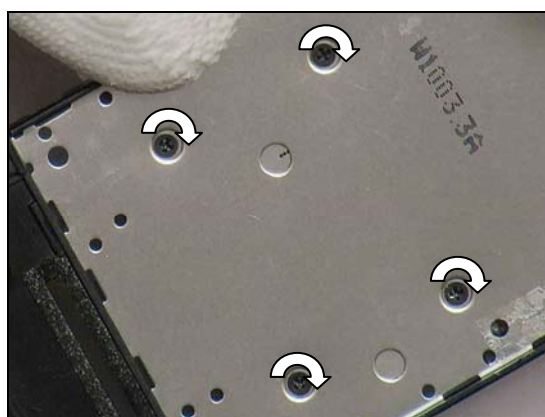


Reassembly

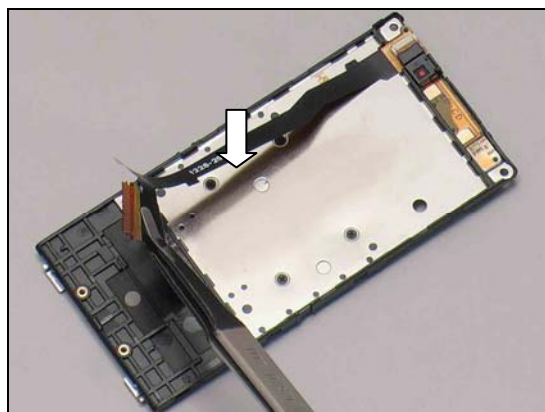
Lift up the Main FPC for access to the four screw holes.



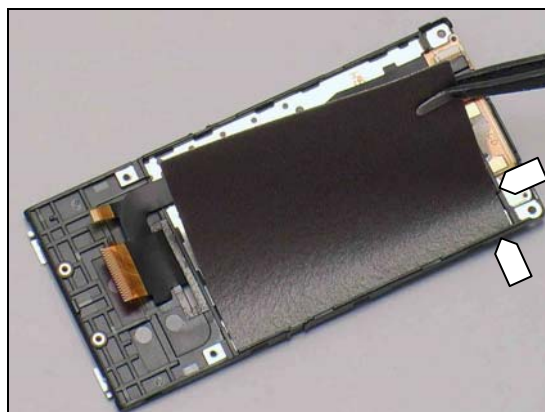
Tighten the four screws Other Len: 1.6 Diam: 1.4 a screwdriver with JCIS No 0 to a torque of 15 Ncm.



Put the Main FPC in place with a flex film assembly tool.



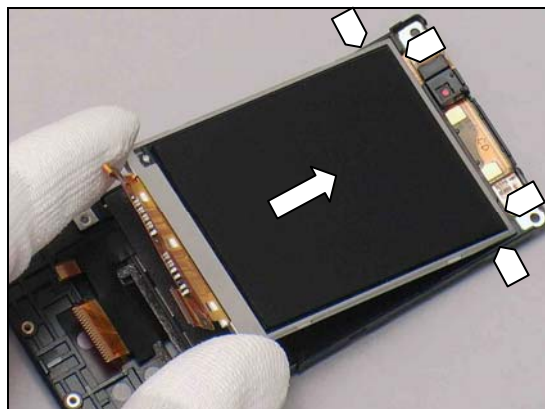
Install the Display Gasket with a flex film assembly tool in the alignment of the right upper corner of the Upper Rear Cover as shown.



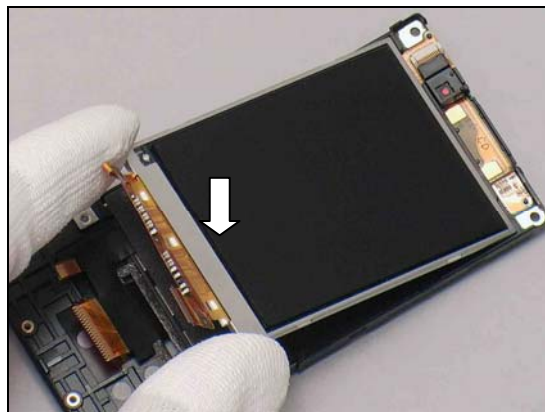
Reassembly

5.2 Display

Install the Display in the alignment of the top corners of the Upper Rear Cover as shown.

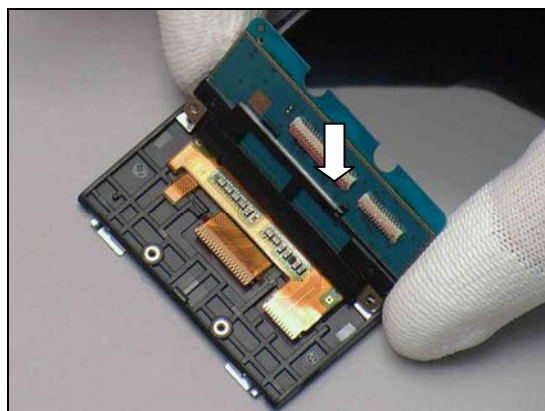


Assemble the Display align to its proper position.

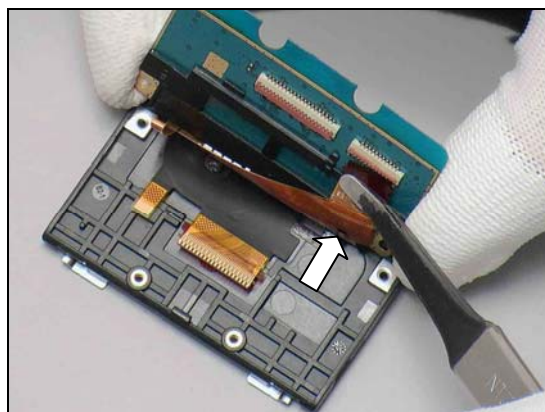


5.3 Sub Keyboard Assy

Put the Sub Keyboard in a vertical position as shown.

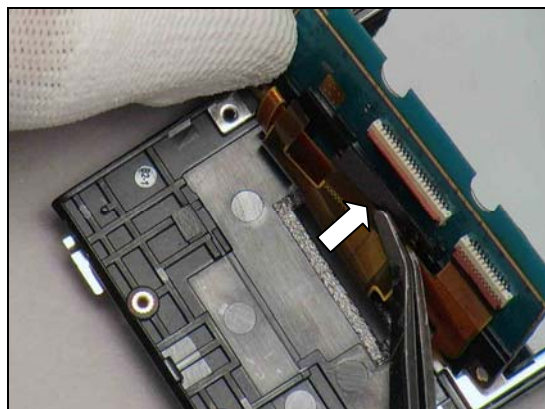


Insert the Display FPC into the ZIF connector with a flex film assembly tool and lock it.

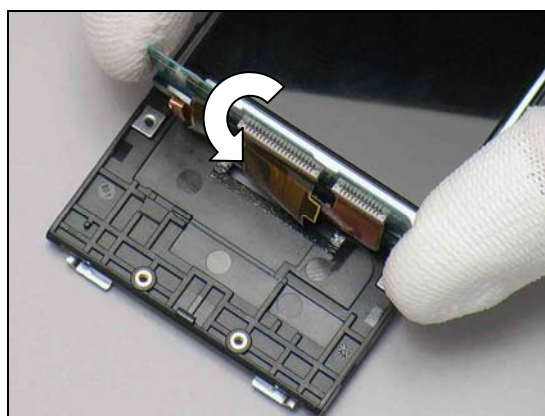


Reassembly

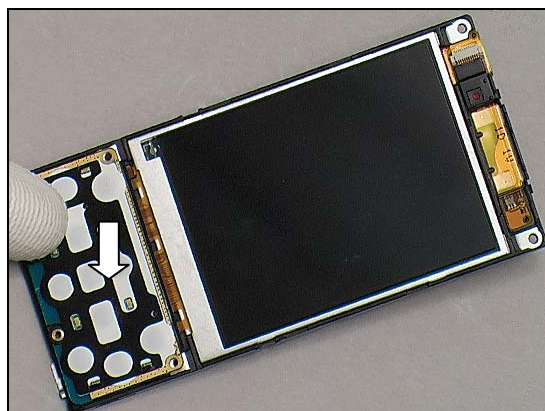
Insert the Main FPC into the ZIF connector with flex film assembly tool and lock it.



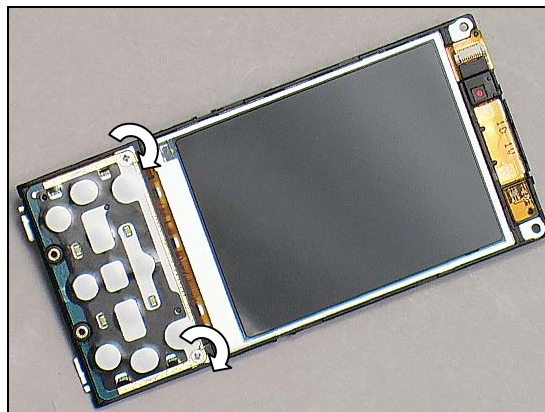
Turn the Sub Keyboard Assy back to a horizontal position.



Press to snap the hooks.



Tighten the two screws M1.4X2.0 with a JCIS No 0 to a torque of 11 Ncm.



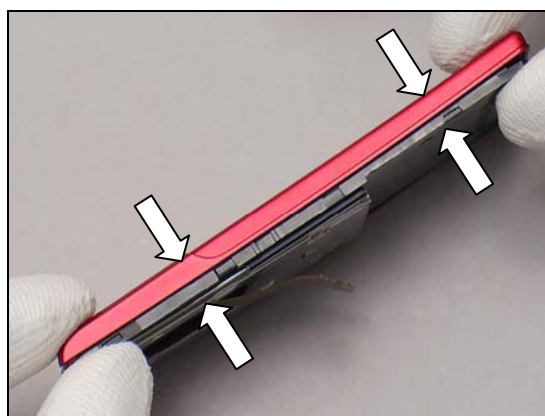
Reassembly

5.4 Upper Front Cover Assy

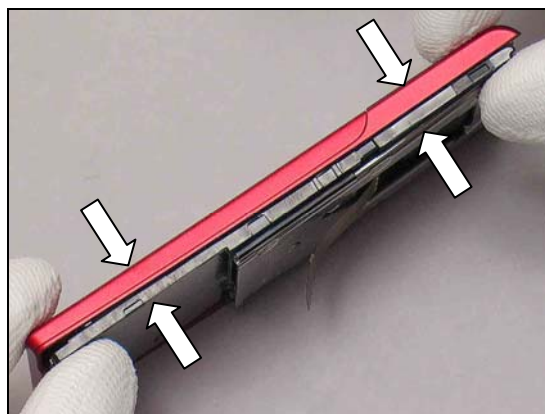
Place the Front Cover on top of the Slide Unit.



Press to snap this side of the Front Cover to the Slide Unit.



Do the same on the opposite side.

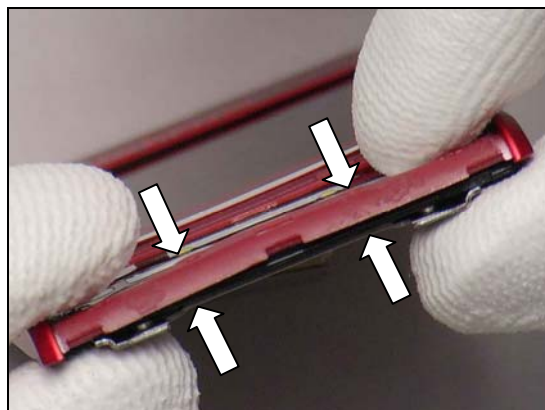


Press to snap the top side of the Front Cover to the Slide Unit.



Reassembly

Press to snap the bottom side of the Front Cover to the Slide Unit.



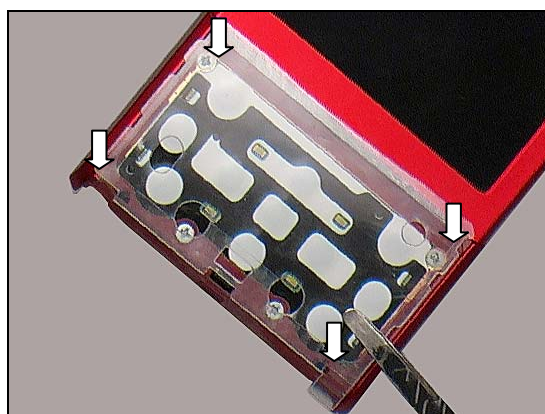
The Upper Front Cover should be installed like this.



Tighten the two screws M1.4X2.0 with a screwdriver with JCIS No 0 to a torque of 11 Ncm.

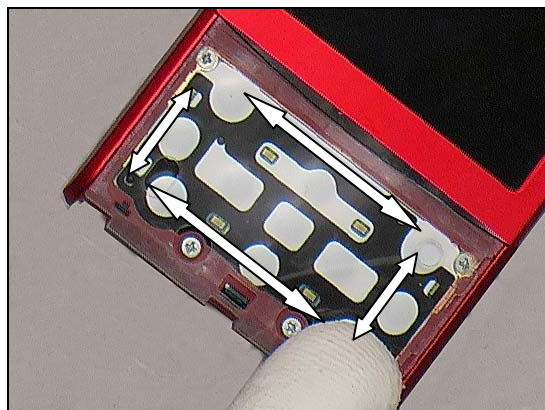


Place the Sub Keypad Adhesive with Protect film on the Upper Front Cover Assy with a flex film assembly tool.

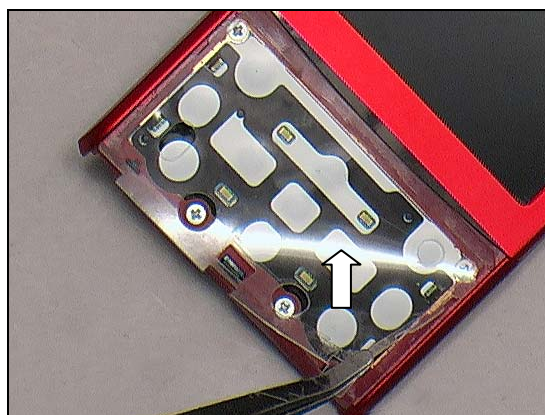


Reassembly

Press around the Protect Film to make the Sub Keypad Adhesive properly attached.

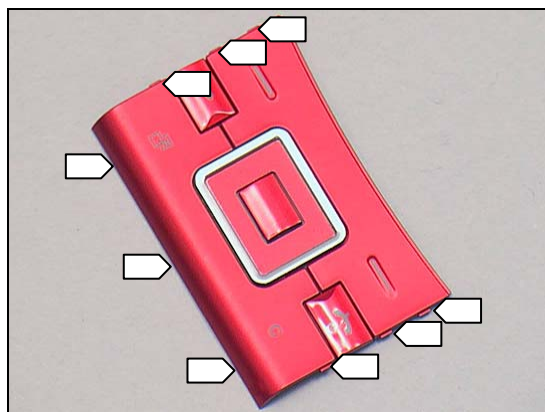


Remove the Protect Film.



5.5 Sub Keypad

There are nine hooks securing the Sub Keypad located around as shown.

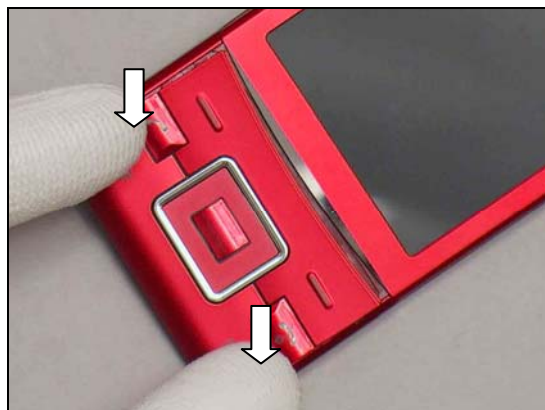


Place the Sub Keypad on the Front Cover in alignment of the two upper corners.



Reassembly

Press around to snap the nine hooks.



5.6 Deco Sheet

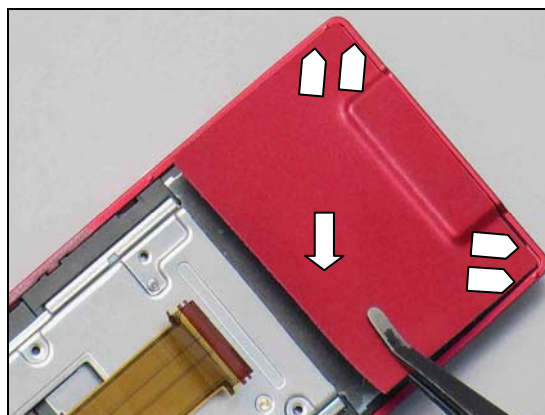
Turn over the Upper unit.



Tighten the two screws M1.4X2.0 with a screwdriver with JCIS No 0 to a torque of 11 Ncm.

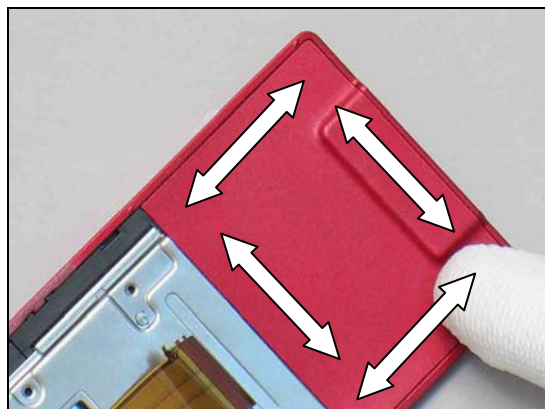


Attach the Deco Sheet on back of the Upper unit in the alignment of the upper corners with a flex film assembly tool.



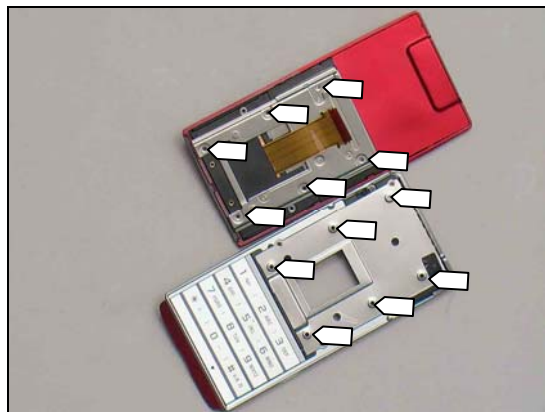
Reassembly

Press around with a finger to make it properly attached.



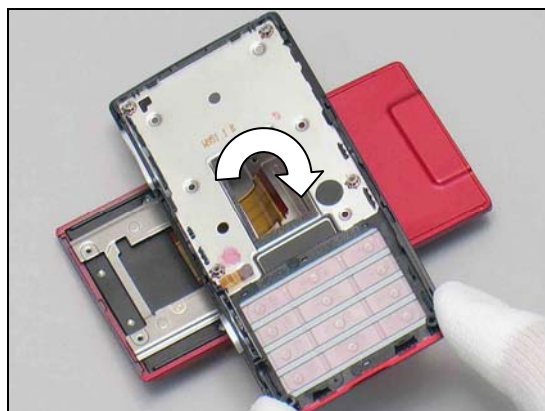
5.7 Lower Front Cover Assy

Align the six screw holes of the Lower Front Cover Assy with the six screw holes on the back side of the Upper Front Cover as shown.

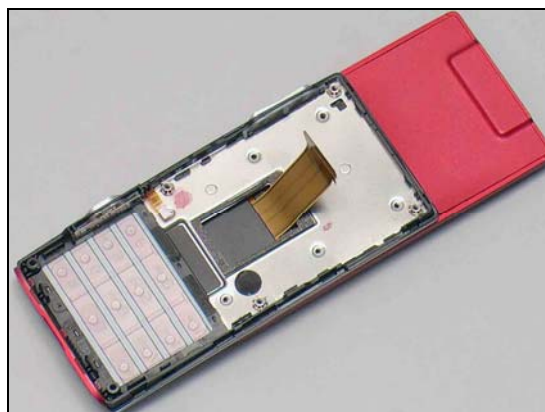


Thread the Main FPC through the square hole of the Lower Front Cover Assy while turning it clock wise to an angle of 90 degree at the same time.

Be careful not to destroy the Main FPC in this operation.

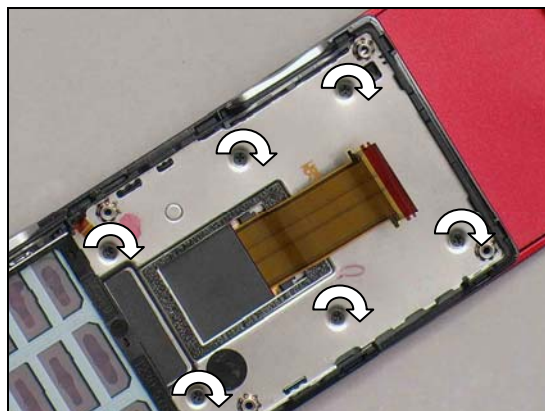


Make sure the Lower Front Cover Assy is properly positioned.



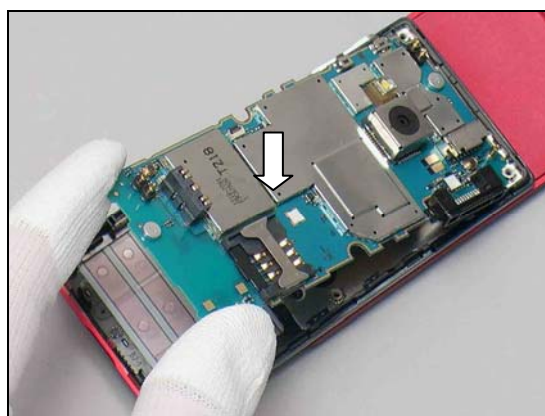
Reassembly

Tighten the six screws Other Len: 1.6 Diam: 1.4 with a screwdriver with JCIS No 0 to a torque of 15 Ncm.

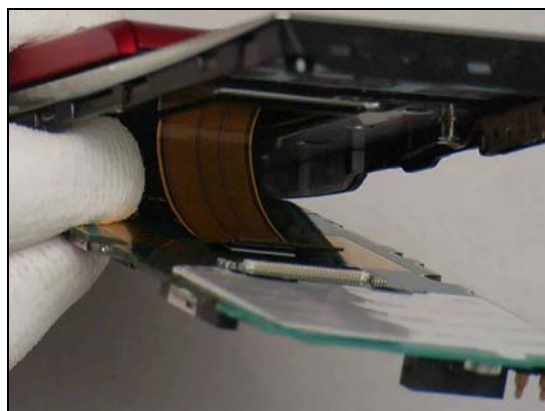


5.8 Main PCBA

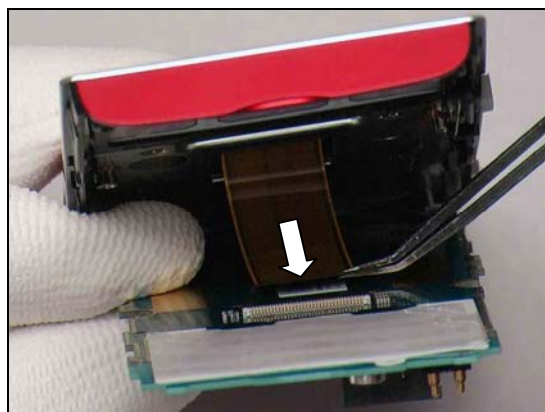
Place the Main PCBA onto the Slide Unit.



Hold the Slide unit in this position as shown.

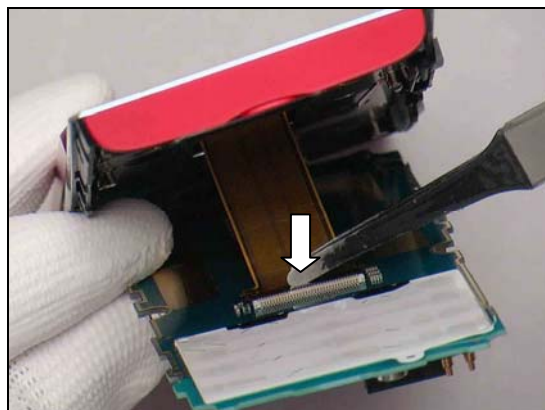


Insert the Main FPC into the ZIF connector by flex film assembly tool as shown.

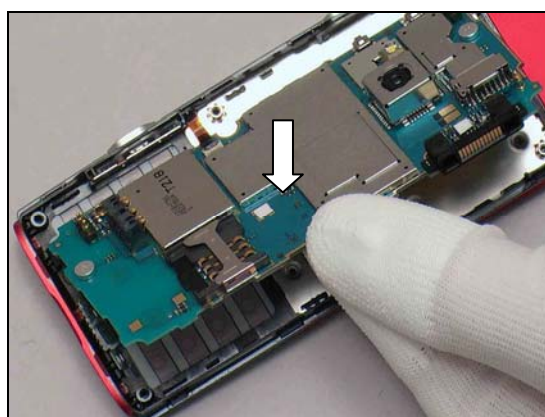


Reassembly

Lock the ZIF connector with a flex film assembly tool.



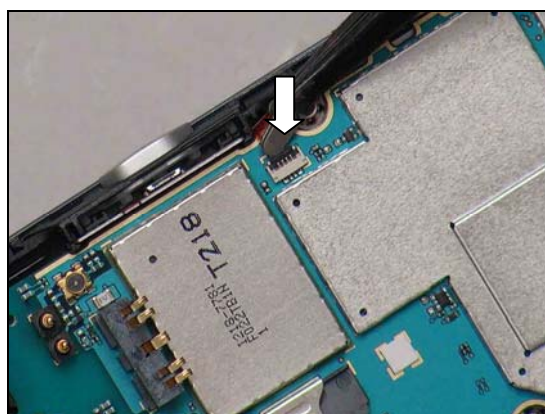
Place the main PCBA onto the Slide Unit and lift up the right side as shown.



Push the Main PCBA to connect the ZIF connector.

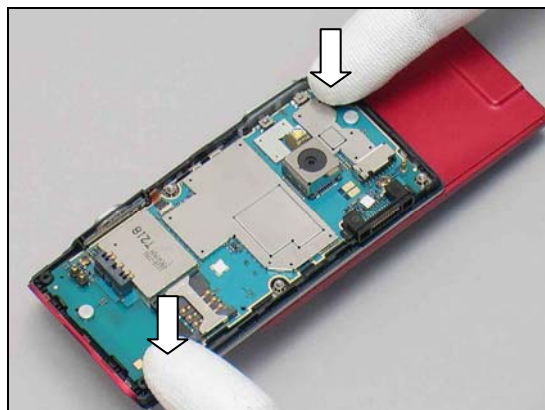


Lock the ZIF connector with a flex film assembly tool.



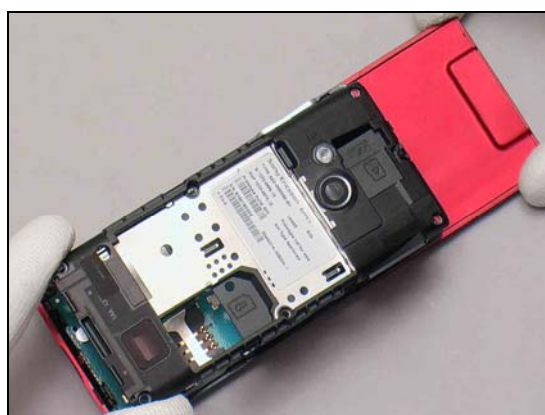
Reassembly

Press to secure the main PCBA to the Slide Unit.

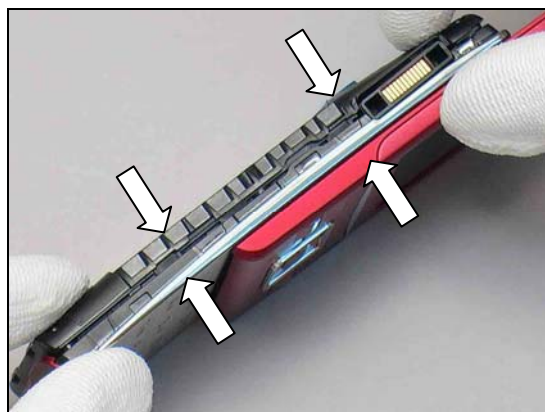


5.9 Lower Rear Cover Frame Assy

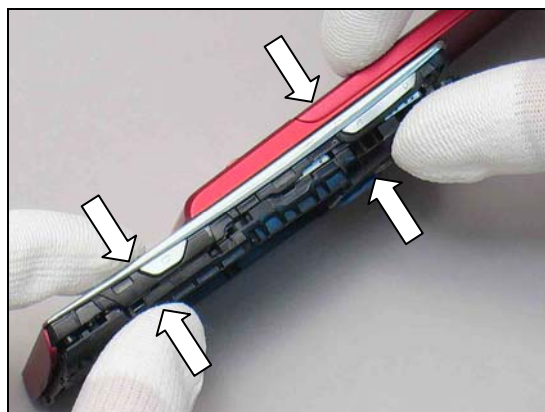
Place the Lower Rear Cover Frame Assy on top of the main PCBA.



Press to snap this side of the Lower Rear Cover Frame Assy to the Slide Unit.



Do the same on the opposite side.



Reassembly

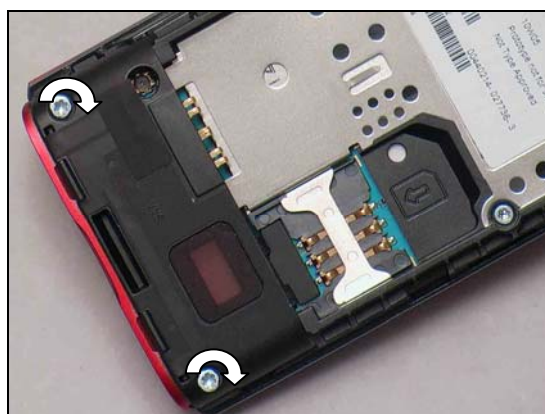
Push the Upper unit downwards to close the slide.



Tighten the four screws 1.6x2.5 with T5 Bits to a torque of 14 Ncm.

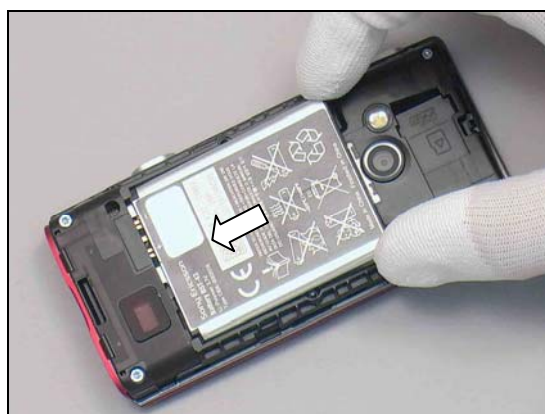


Tighten the two screws M1.7x4.0 with T6 Bits to a torque of 21 Ncm.



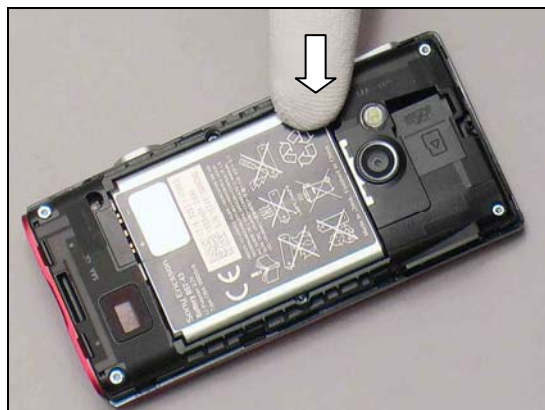
5.10 Battery & Battery Cover

Insert the Battery at the top like this.



Reassembly

Press at the bottom to secure its position.



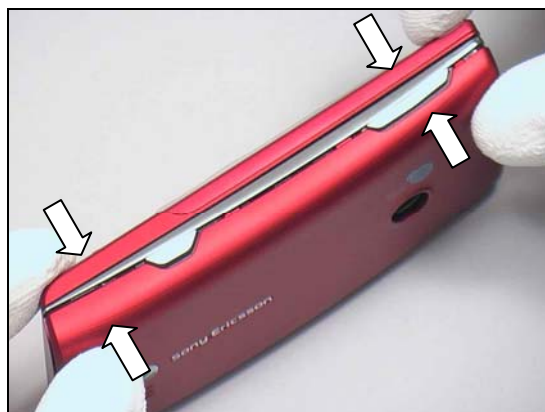
Place the Battery Cover onto the Rear Cover.



Press to snap this side with fingers.



Press to snap the other sides with fingers.





6 Revision History

Rev.	Date	Changes / Comments
1	2010-April-14	Initial release
2	2010-04-19	Technical writing errors updated.
3	2010-04-19	Technical writing errors updated.
4	2010-05-10	Add Board Swap chapter